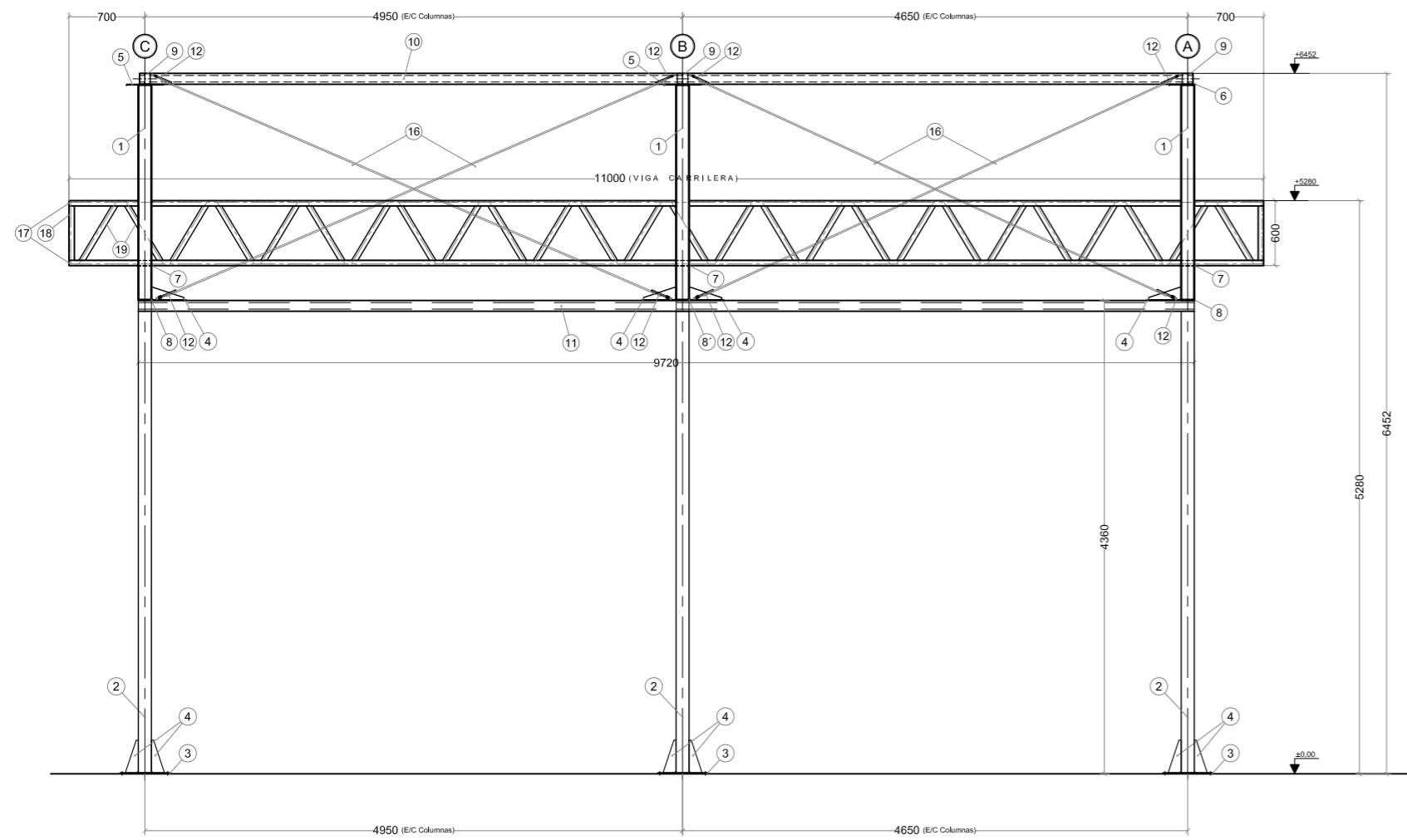
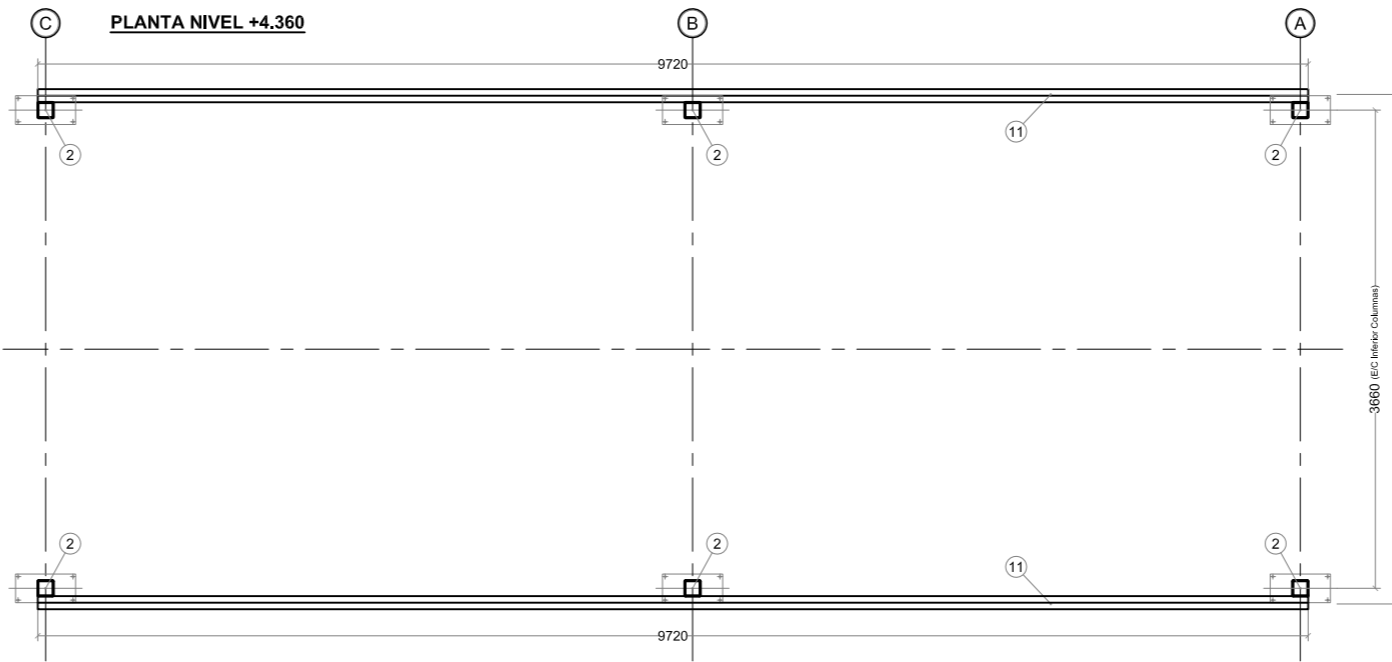
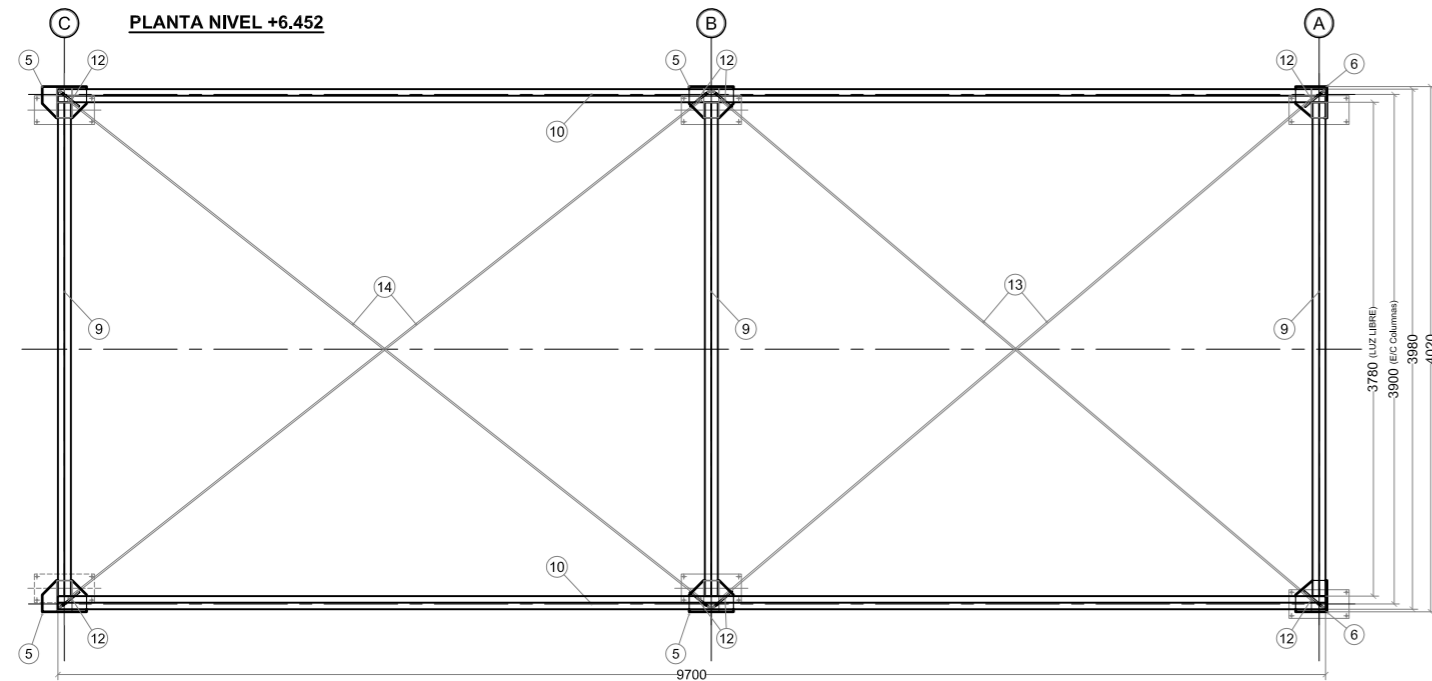
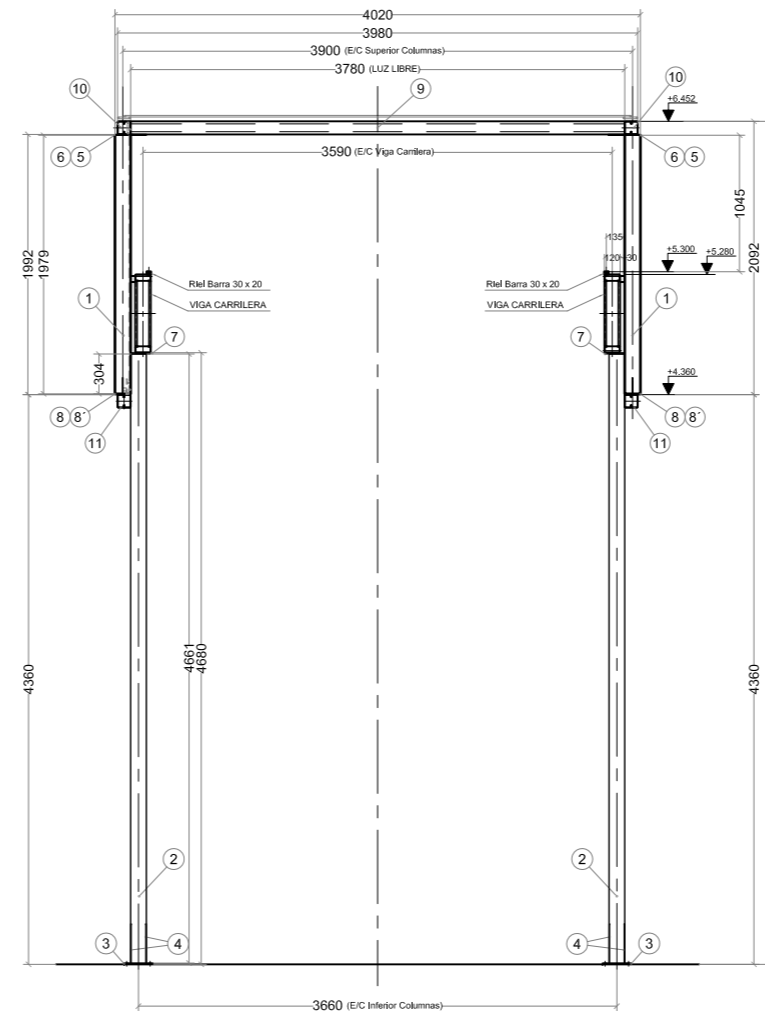


VISTA LATERAL



VISTA LATERAL



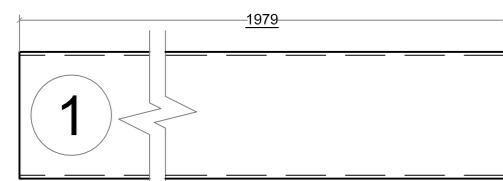
LISTA DE MATERIALES

POS	Material	Long. [mm]	Cant.	Long. Total [m]	Peso [Kg]	
					Unit.	Total
1	Caño Cuadrado 120x120 ≠ 1/8"	4661	6	27,97	11,77 Kg/m	329,16
2	Caño Cuadrado 120x120 ≠ 1/8"	1976	6	11,86	11,77 Kg/m	139,59
3	Chapa ≠ 3/8"	460 x 220	6	0,607 m2	75,36 Kg/m2	45,76
4	Chapa ≠ 1/4"	120 x 300	32	1,152 m2	50,24 Kg/m2	57,88
5	Chapa ≠ 1/4"	240 x 340	4	0,326 m2	50,24 Kg/m2	16,40
6	Chapa ≠ 1/4"	240 x 240	2	0,115 m2	50,24 Kg/m2	5,79
7	Chapa ≠ 3/8"	150 x 150	6	0,326 m2	75,36 Kg/m2	24,60
8	Chapa ≠ 1/4"	540 x 120	4	0,259	50,24 Kg/m2	13,01
8'	Chapa ≠ 1/4"	860 x 120	2	0,206	50,24 Kg/m2	10,35
9	Perfil C 100x50x20 ≠ 2 (Galv.)	3780	6	22,68	3,44 Kg/m	78,02
10	Perfil C 100x50x20 ≠ 2 (Galv.)	9700	4	39,08	3,44 Kg/m	134,44
11	Perfil C 100x50x20 ≠ 2 (Galv.)	9720	4	38,88	3,44 Kg/m	133,75
12	Tilla: Barra Redonda Ø 1/2"	200	24	4,80	0,99 Kg/m	4,75
13	Barra Redonda Ø 1/2"	5950	2	11,90	0,99 Kg/m	11,78
14	Barra Redonda Ø 1/2"	6170	2	12,34	0,99 Kg/m	12,22
15	Barra Redonda Ø 1/2"	4730	4	18,92	0,99 Kg/m	18,73
16	Barra Redonda Ø 1/2"	5000	4	20,00	0,99 Kg/m	19,80
17	Perfil C 120x50x20 ≠ 3,2 (Galv.)	11000	4	44,00	6,02 Kg/m	264,88
18	Perfil C 120x50x20 ≠ 3,2 (Galv.)	500	4	2,00	6,02 Kg/m	12,04
19	Perfil C 120x50x15 ≠ 2 (Galv.)	613	52	31,88	3,77 Kg/m	120,17

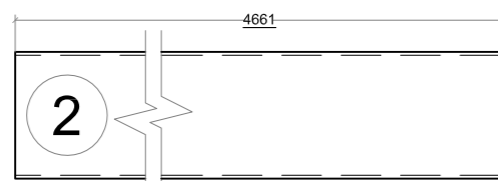
△					
△					
△					
REV.	DESCRIPCION	DIBUJO	PROYECTO	APROBO	FECHA
TAIBI S.R.L. INGENIERIA - INSTALACIONES		CLIENTE: CRAMSAC OBRA: INSTALACION CATAFORESIS TITULO: ESTRUCTURA SOSTEN TRANSPORTADORES			
DIBUJO: AAR	PROYECTO: LRS	PLANO N°: C-03	REEMPLAZA A:	ESCALA 1:50	
APROBO: JT	FECHA: 16/03/2007			REV.: △	
LA FIRMA SE RESERVA EL DERECHO DE ESTE ELABORADO, PROHIBIENDO SU REPRODUCCION PARCIAL O TOTAL, SIN PREVIA AUTORIZACION ESCRITA.					

BASES; CARTELAS y SOPORTES (Chapa)

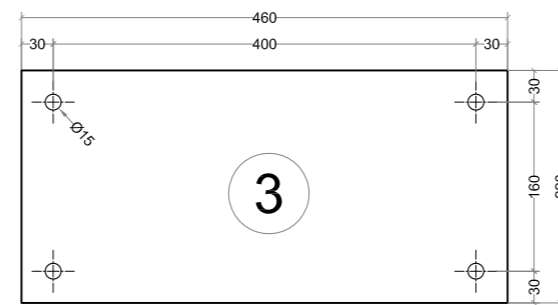
COLUMNAS (Caño Cuadrado)



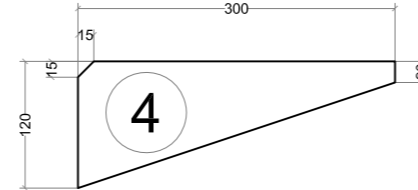
Caño Cuadrado 120x120 ≠ 1/8"
Cant.: 6



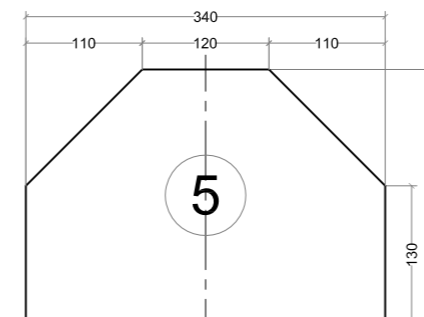
Caño Cuadrado 120x120 ≠ 1/8"
Cant.: 6



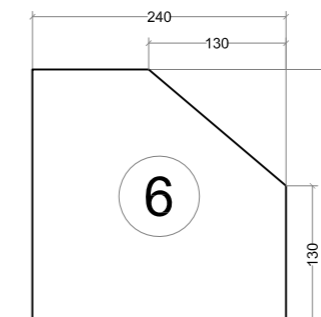
Chapa ≠ 3/8"
Cant.: 6



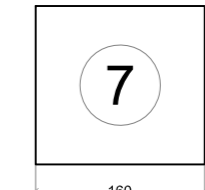
Chapa ≠ 1/4"
Cant.: 32



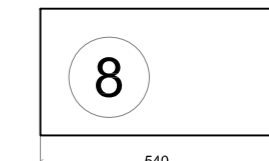
Chapa ≠ 1/4"
Cant.: 4



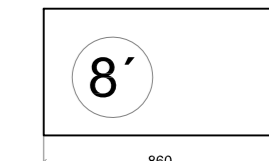
Chapa ≠ 1/4"
Cant.: 2



Chapa ≠ 3/8"
Cant.: 6

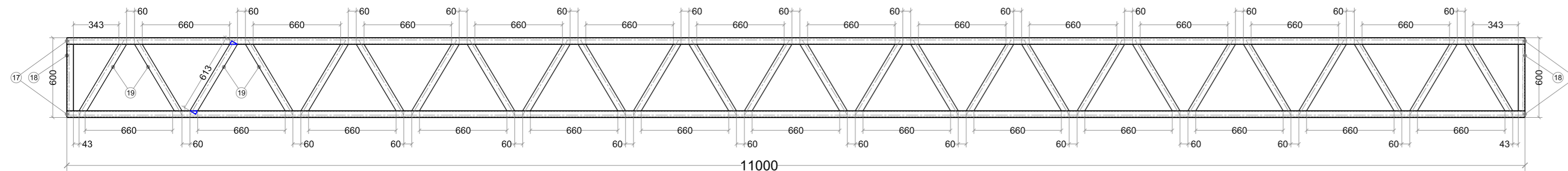


Chapa ≠ 1/4"
Cant.: 4

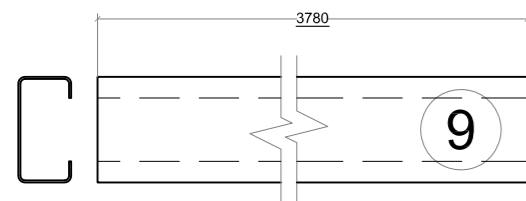


Chapa ≠ 1/4"
Cant.: 2

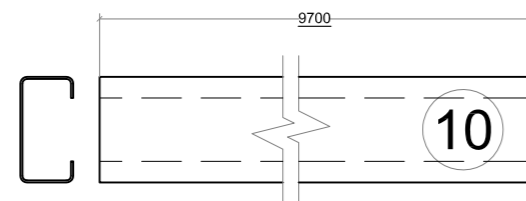
VIGA CARRILERA - Cantidad: 2 - (Perfil C)



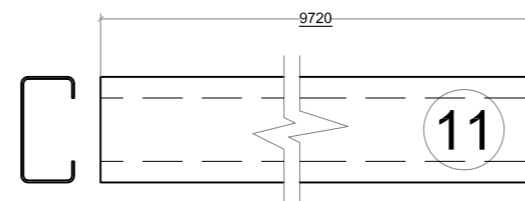
VIGAS DE ARRIOSTRAMIENTO (Perfil C)



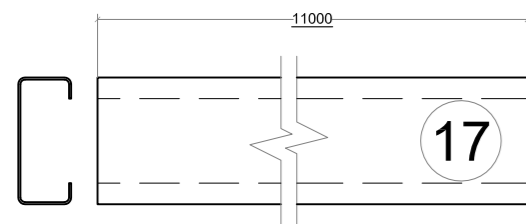
Perfil C 100x50x20 ≠ 2
Cant.: 6



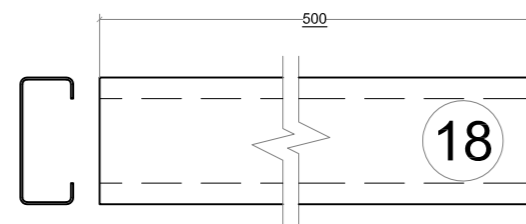
Perfil C 100x50x20 ≠ 2
Cant.: 4



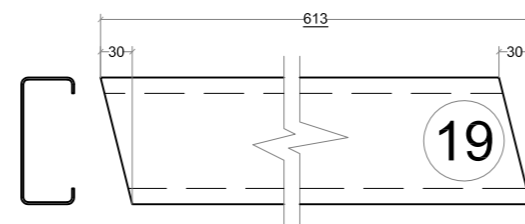
Perfil C 100x50x20 ≠ 2
Cant.: 4



Perfil C 120x50x20 ≠ 3,2
Cant.: 4

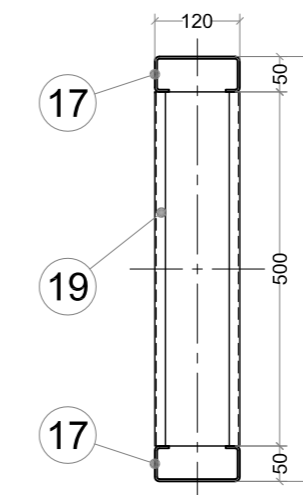


Perfil C 120x50x20 ≠ 3,2
Cant.: 4

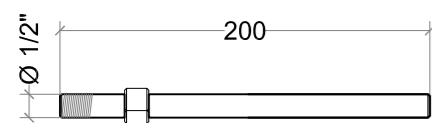


Perfil C 120x50x15 ≠ 2
Cant.: 52

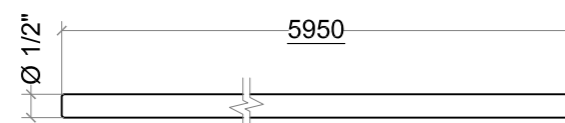
Corte Típico Viga Carrilera



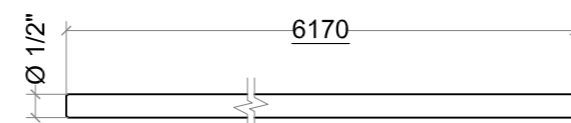
TENSORES DE ARRIOSTRAMIENTO (Barra Redonda Ø1/2")



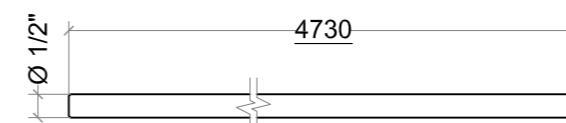
12 Tilla para Arriostramientos
Cant.: 24



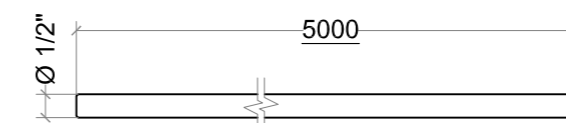
13 Barra Redonda Ø 1/2"
Cant.: 2



14 Barra Redonda Ø 1/2"
Cant.: 2



15 Barra Redonda Ø 1/2"
Cant.: 4



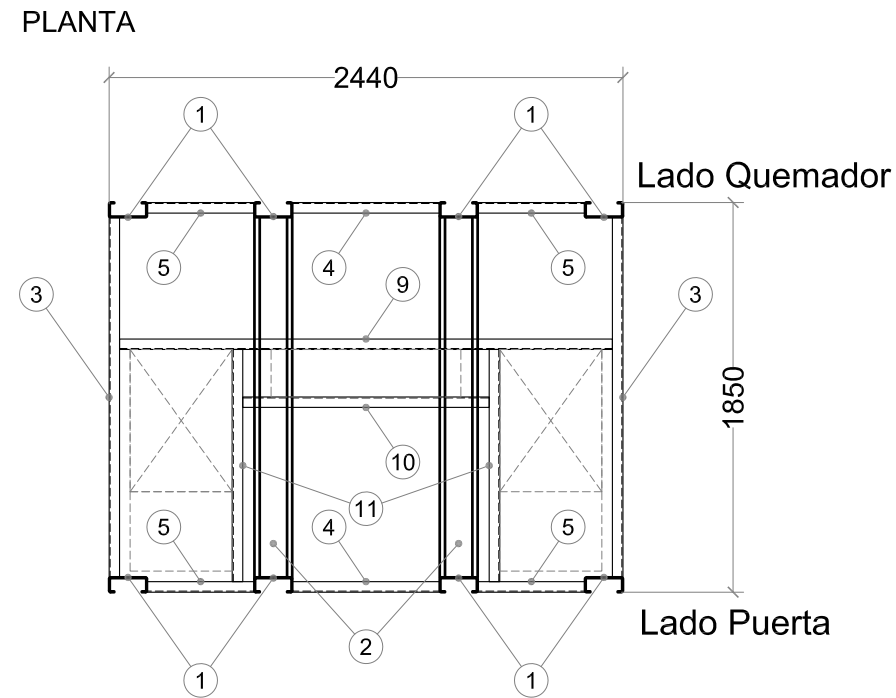
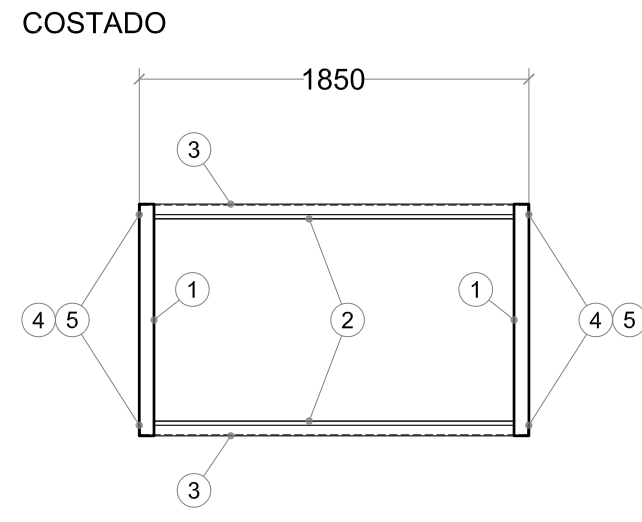
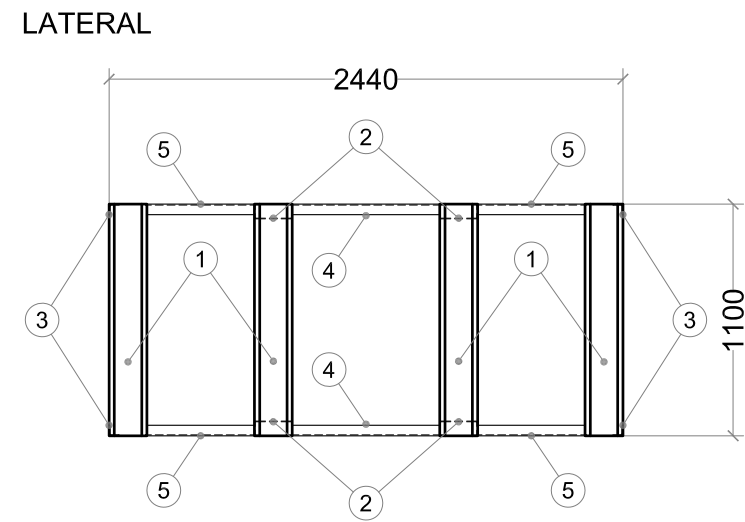
16 Barra Redonda Ø 1/2"
Cant.: 4

LISTA DE MATERIALES						
POS	Material	Long. [mm]	Cant.	Long. Total [m]	Peso [Kg]	
					Unit.	Total
1	Caño Cuadrado 120x120 ≠ 1/8"	4661	6	27,97	11,77 Kg/m	329,16
2	Caño Cuadrado 120x120 ≠ 1/8"	1976	6	11,86	11,77 Kg/m	139,59
3	Chapa ≠ 3/8"	460 x 220	6	0,607 m2	75,36 Kg/m2	45,76
4	Chapa ≠ 1/4"	120 x 300	32	1,152 m2	50,24 Kg/m2	57,88
5	Chapa ≠ 1/4"	240 x 340	4	0,326 m2	50,24 Kg/m2	16,40
6	Chapa ≠ 1/4"	240 x 240	2	0,115 m2	50,24 Kg/m2	5,79
7	Chapa ≠ 3/8"	150 x 150	6	0,326 m2	75,36 Kg/m2	24,60
8	Chapa ≠ 1/4"	540 x 120	4	0,259	50,24 Kg/m2	13,01
8'	Chapa ≠ 1/4"	860 x 120	2	0,206	50,24 Kg/m2	10,35
9	Perfil C 100x50x20 ≠ 2 (Galv.)	3780	6	22,68	3,44 Kg/m	78,02
10	Perfil C 100x50x20 ≠ 2 (Galv.)	9700	4	39,08	3,44 Kg/m	134,44
11	Perfil C 100x50x20 ≠ 2 (Galv.)	9720	4	38,88	3,44 Kg/m	133,75
12	Tilla: Barra Redonda Ø 1/2"	200	24	4,80	0,99 Kg/m	4,75
13	Barra Redonda Ø 1/2"	5950	2	11,90	0,99 Kg/m	11,78
14	Barra Redonda Ø 1/2"	6170	2	12,34	0,99 Kg/m	12,22
15	Barra Redonda Ø 1/2"	4730	4	18,92	0,99 Kg/m	18,73
16	Barra Redonda Ø 1/2"	5000	4	20,00	0,99 Kg/m	19,80
17	Perfil C 120x50x20 ≠ 3,2 (Galv.)	11000	4	44,00	6,02 Kg/m	264,88
18	Perfil C 120x50x20 ≠ 3,2 (Galv.)	500	4	2,00	6,02 Kg/m	12,04
19	Perfil C 120x50x15 ≠ 2 (Galv.)	613	52	31,88	3,77 Kg/m	120,17

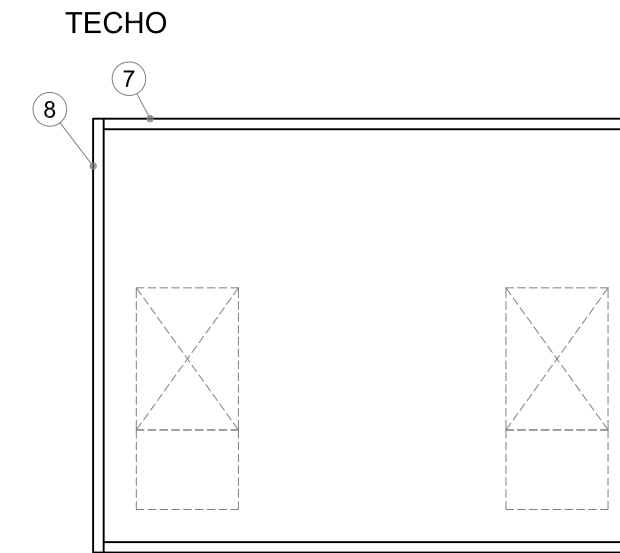
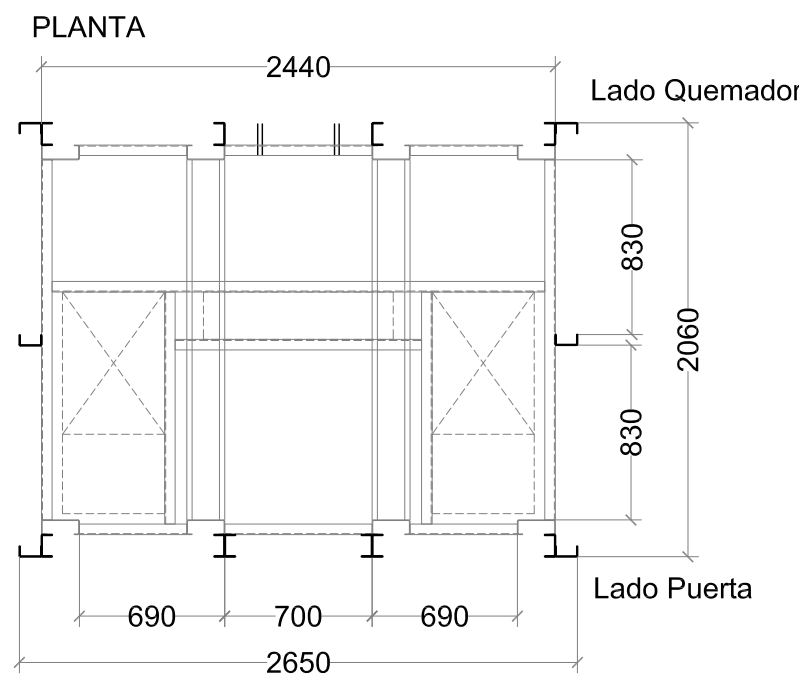
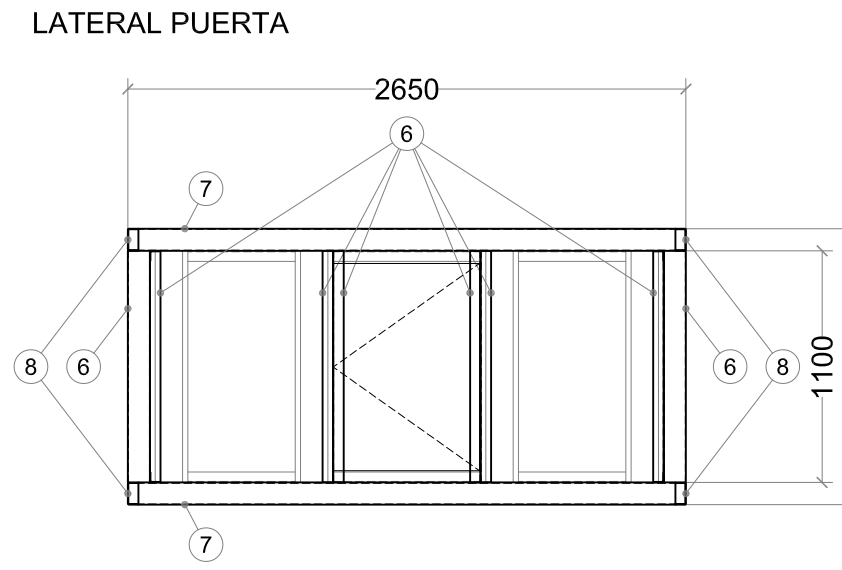
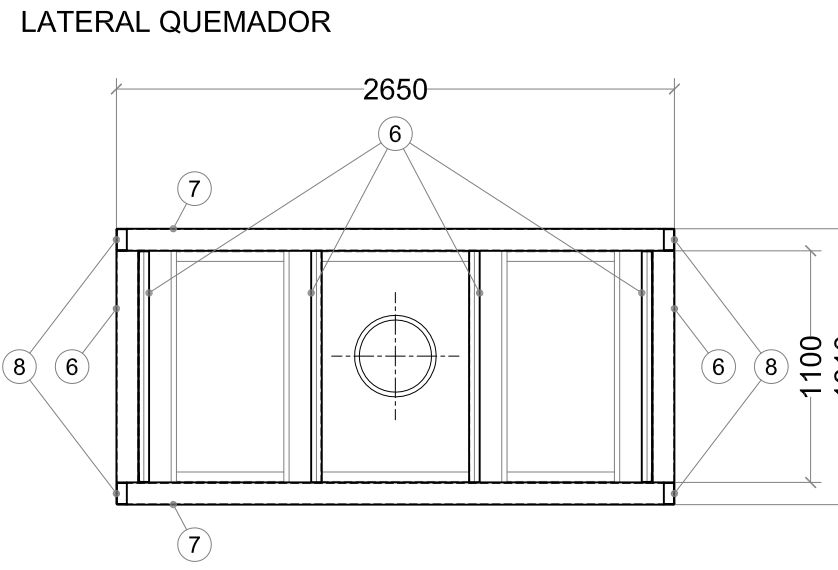
REV.	DESCRIPCION	DIBUJO	PROYECTO	APROBO	FECHA

TAIBI S.R.L. INGENIERIA - INSTALACIONES		CLIENTE: CRAMSAC	
PROYECTO: LRS		OBRA: INSTALACION CATAFORESIS	
APROBO: JT		TITULO: FABRICACION Estructura Sostén Transportadores	
FECHA: 18/03/2007		PLANO N°: C-04	REEMPLAZA A:
LA FIRMA SE RESERVA EL DERECHO DE ESTE ELABORADO, PROHIBIENDO SU REPRODUCCION PARCIAL O TOTAL, SIN PREVIA AUTORIZACION ESCRITA.		ESCALA 1:50	REV.:

ESTRUCTURA PRINCIPAL

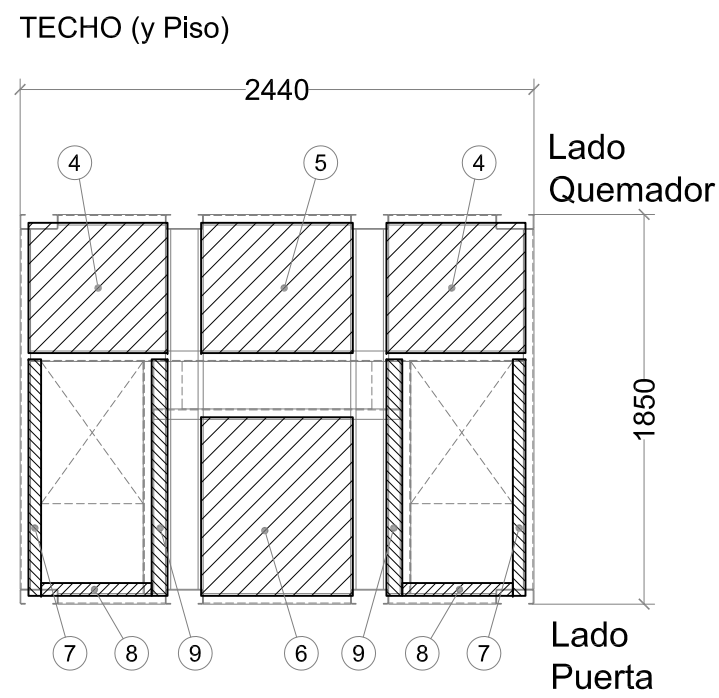
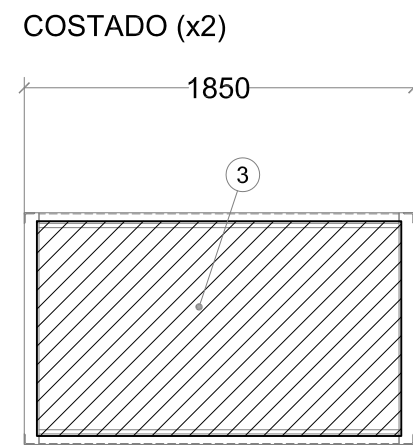
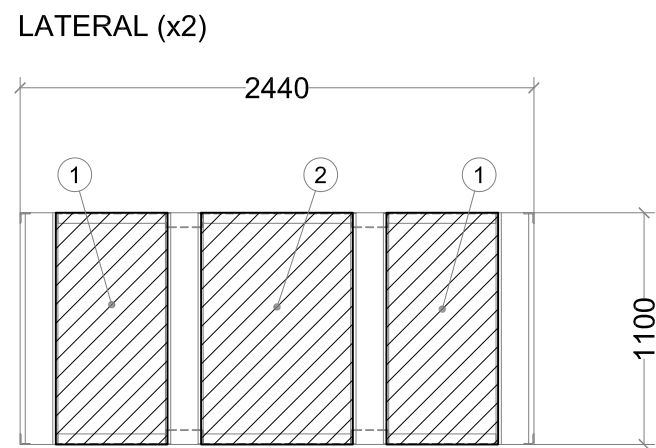


ESTRUCTURA AISLACION



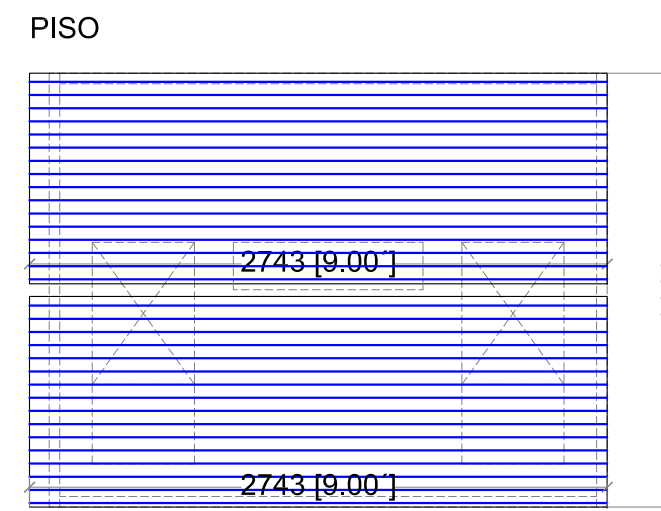
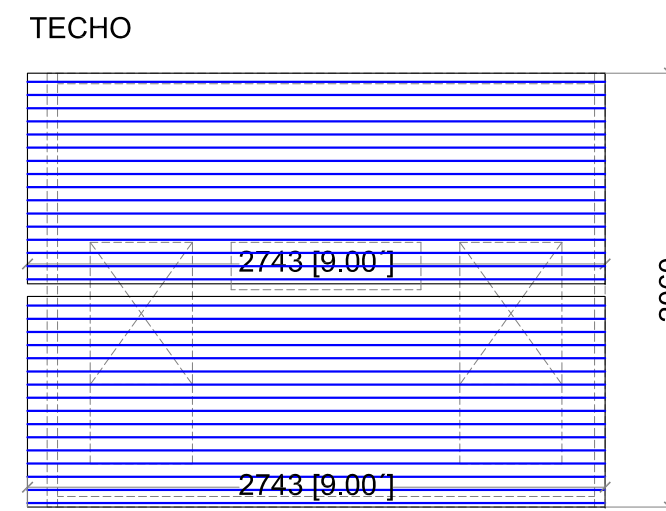
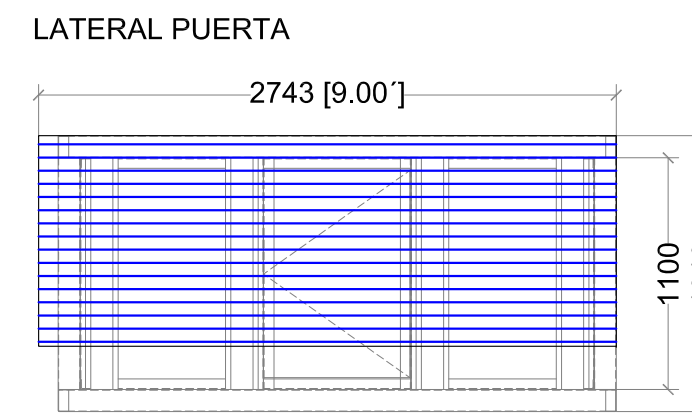
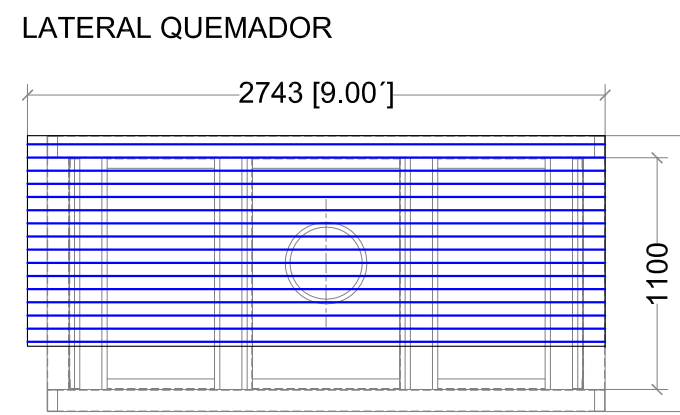
BANCO DE CALOR				
POS	Material	Long. [mm]	Cant.	Long. Total [m]
①	Perfil C 180x70x25 ≠ 3,2mm	1100	8	8,800
②	Perfil C 180x70x25 ≠ 3,2mm	1710	4	6,840
③	Perfil L 2" ≠ 3/16"	1710	4	6,840
④	Perfil L 2" ≠ 3/16"	700	4	2,800
⑤	Perfil L 2" ≠ 3/16"	510	8	4,080
⑥	Perfil U 105x50 ≠ 2,5mm	1100	12	13,200
⑦	Perfil U 105x50 ≠ 2,5mm	2440	4	9,760
⑧	Perfil U 105x50 ≠ 2,5mm	2060	4	8,240
⑨	Perfil L 2" ≠ 3/16"	2340	2	4,680
⑩	Perfil L 2" ≠ 3/16"	1170	2	2,340
⑪	Perfil L 2" ≠ 3/16"	1100	4	2,200

CHAPA REVESTIMIENTO INTERIOR (BW18)

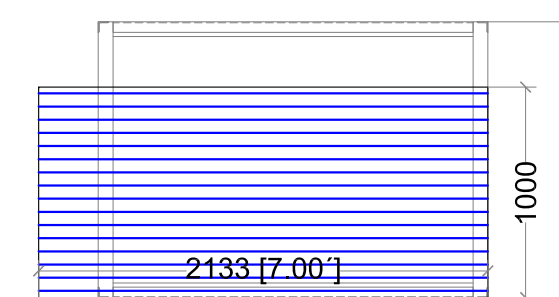


REV. INT. (Chapa BW18)			
POS	Material	Long. [mm]	Cant.
①	Chapa BW18	1100x530	4
②	Chapa BW18	1100x720	2
③	Chapa BW18	1730x1020	2
④	Chapa BW18	660x620	4
⑤	Chapa BW18	720x620	2
⑥	Chapa BW18	850x720	2
⑦	Chapa BW18	1125x60	4
⑧	Chapa BW18	525x60	4
⑨	Chapa BW18	1125x75	4

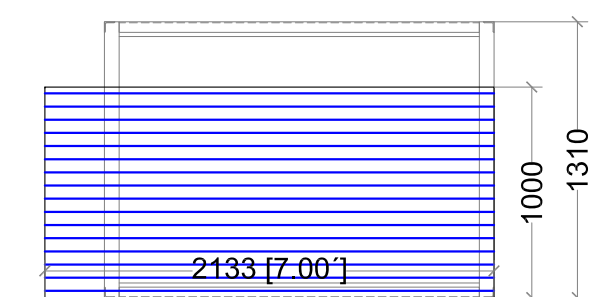
CHAPA REVESTIMIENTO EXTERIOR



COSTADO



COSTADO



COMPUTO TOTAL Revestimiento Exterior
Chapa Cincalum (ancho útil 1000mm)
Longitudes en pies [']

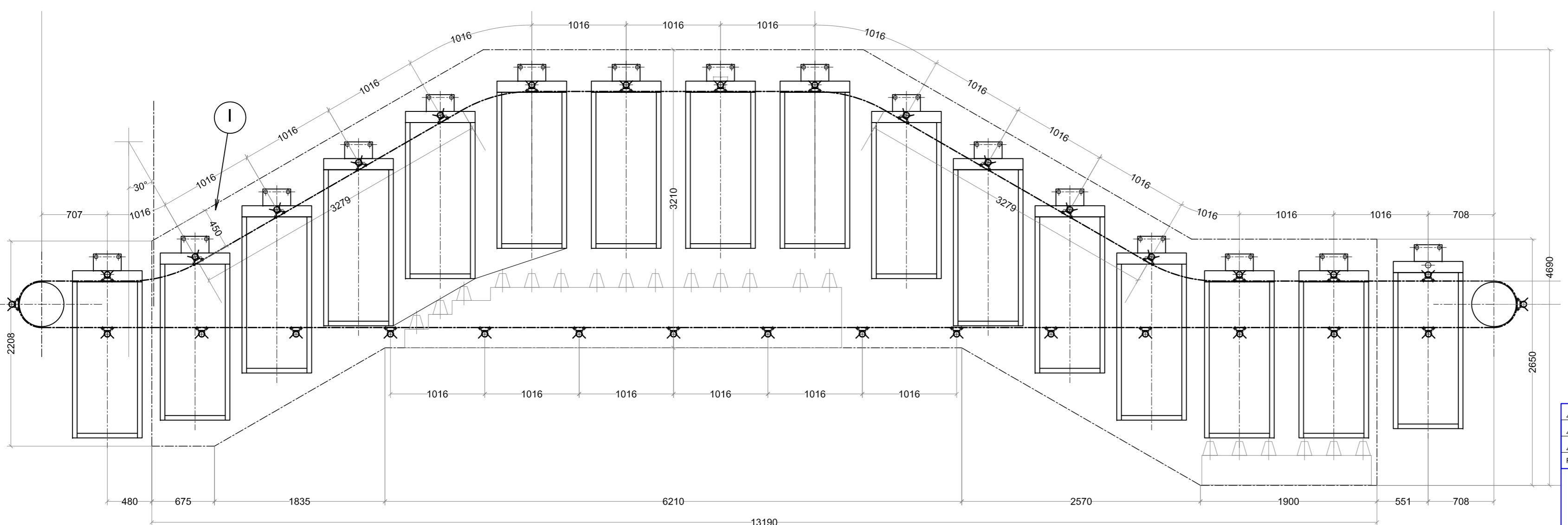
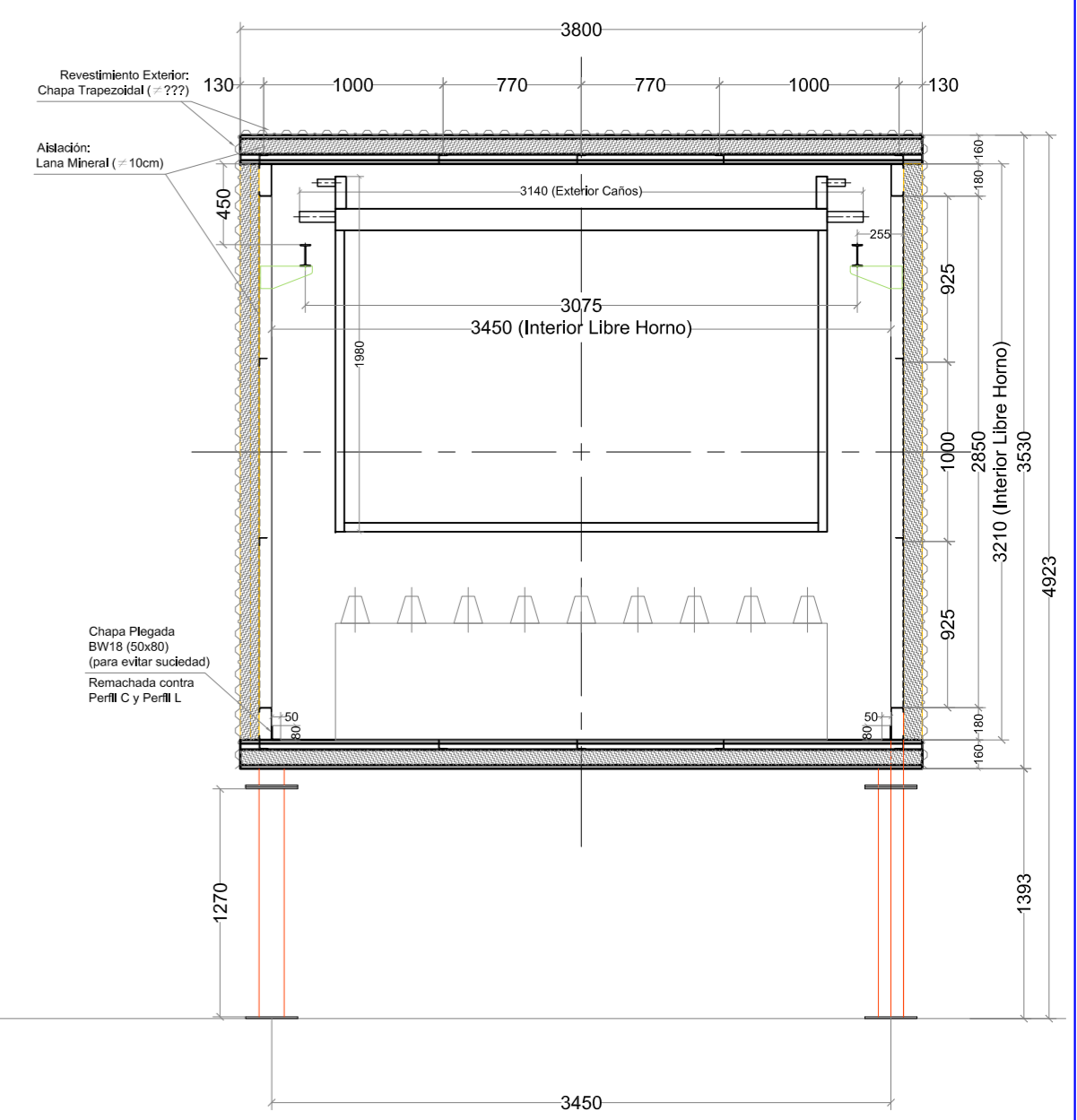
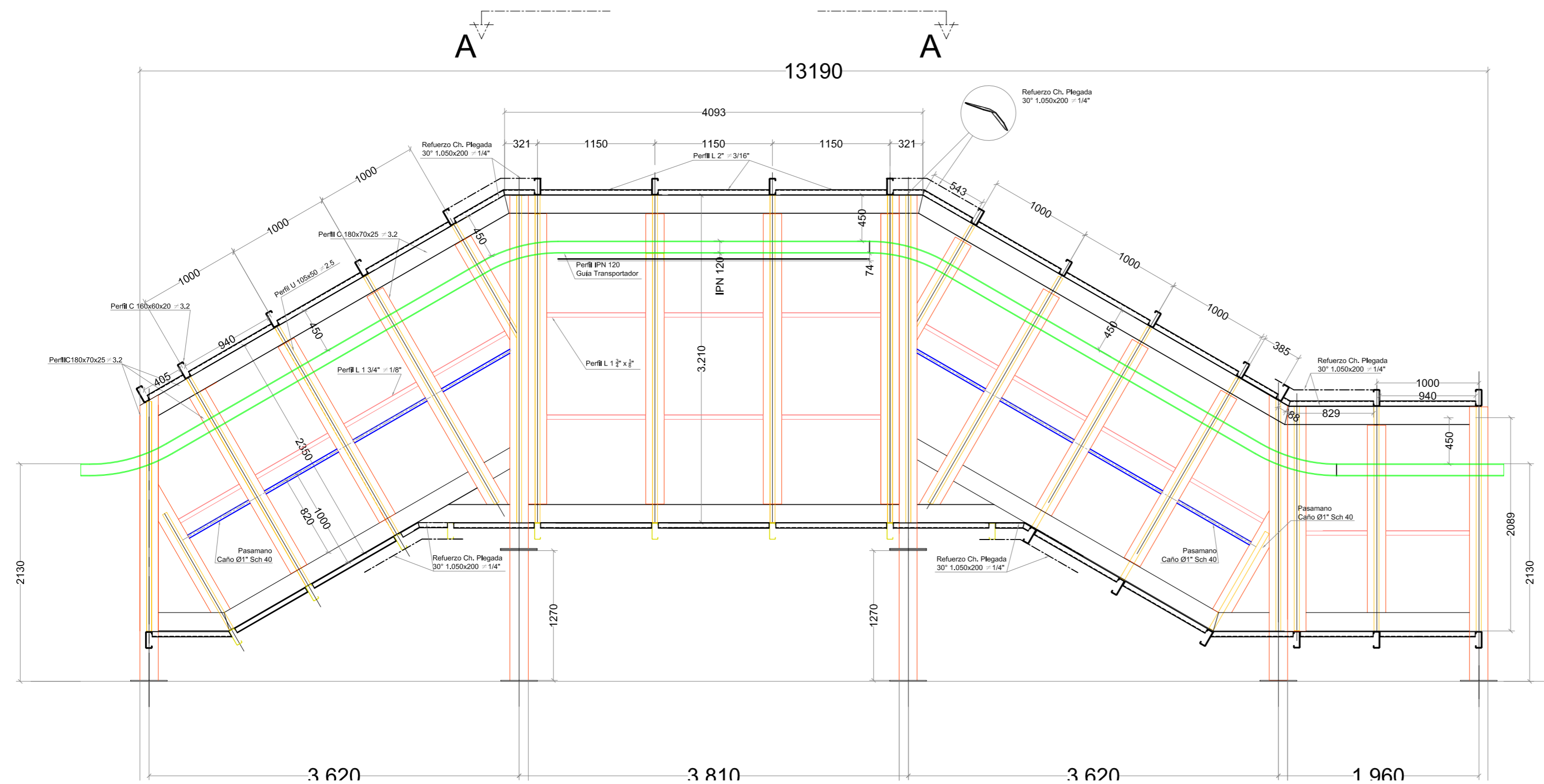
7 CH. 9*
2 CH. 7'

* Con 1 Chapa y los recortes se cubren los 4 tramos faltantes de 310mm.

REV.	DESCRIPCION	DIBUJO	PROYECTO	APROBO	FECHA
△					
△					
△					

TAIBI S.R.L. INGENIERIA - INSTALACIONES		CLIENTE: CRAMSAC
DIBUJO: AAR		OBRA: INSTALACION CATAFORESIS
PROYECTO: LRS		TITULO: BANCO DE CALOR
APROBO: JT		PLANO N°: ZZ-01
FECHA: 01/07/2007		REEMPLAZA A:
		ESCALA 1:25
		REV.: △

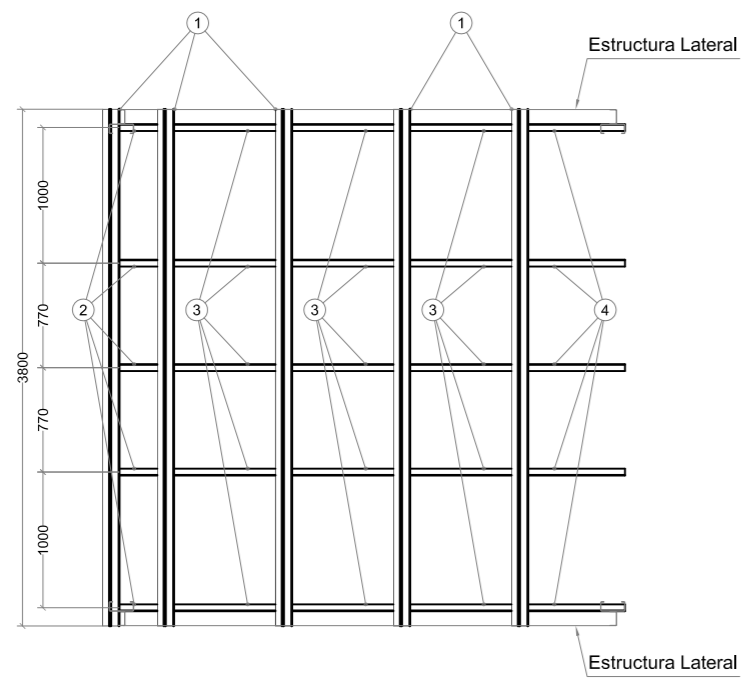
LA FIRMA SE RESERVA EL DERECHO DE ESTE ELABORADO, PROHIBIENDO SU REPRODUCCION PARCIAL O TOTAL, SIN PREVIA AUTORIZACION ESCRITA.



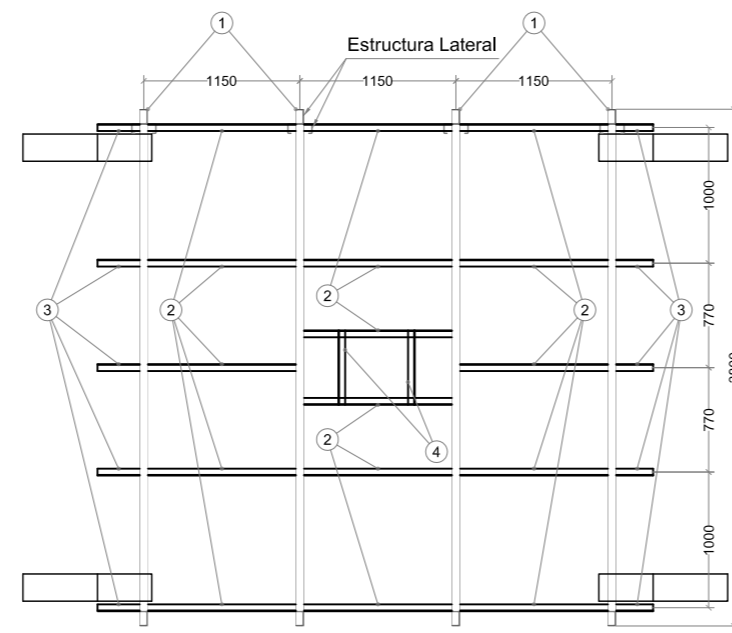
REV.	DESCRIPCION	DIBUJO	PROYECTO	APROBO	FECHA

TAIBI S.R.L. INGENIERIA - INSTALACIONES		CLIENTE: CRAMSAC	
DIBUJO: AAR		OBRA: INSTALACION CATAFORESIS	
PROYECTO: LRS		TITULO: HORNO DE SECADO - Estructura	
APROBO: JT		PLANO N°: M-05	REEMPLAZA A:
FECHA: 05/04/2007		ESCALA 1:25	REV.:
LA FIRMA SE RESERVA EL DERECHO DE ESTE ELABORADO, PROHIBIENDO SU REPRODUCCION PARCIAL O TOTAL, SIN PREVIA AUTORIZACION ESCRITA.			

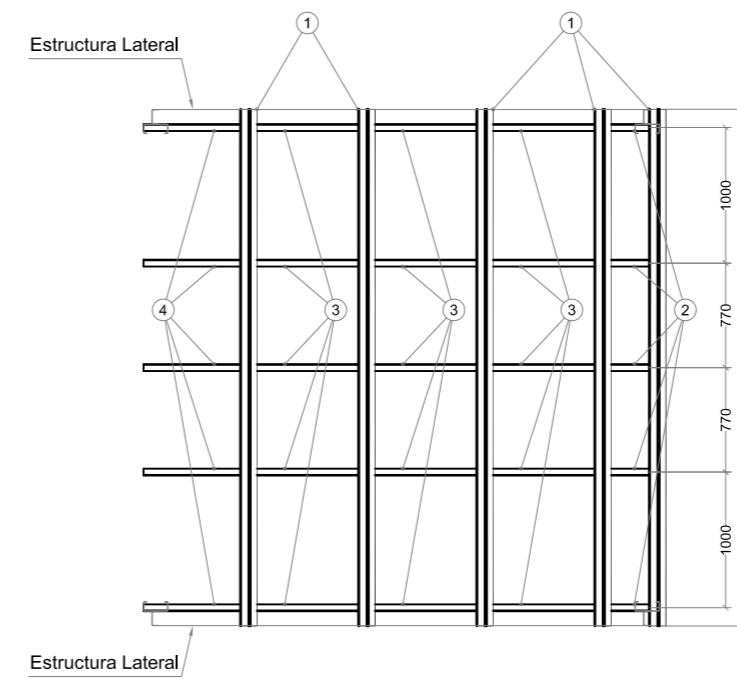
TECHO



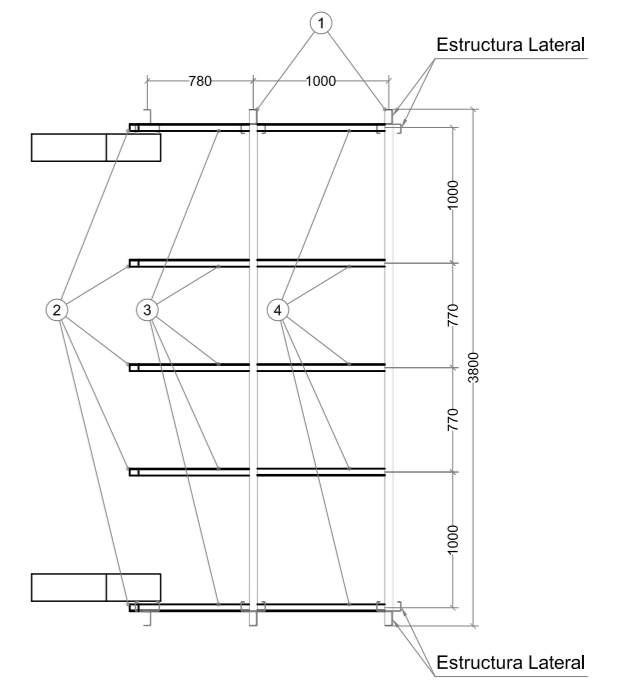
MODULO I				
POS	Material	Long. [mm]	Cant.	Long. Total [m]
①	Perfil C 160x60x20 ≠3.2	3800	5	19,000
				19,000
②	Perfil L 2" ≠3/16"	405	5	2,025
③	Perfil L 2" ≠3/16"	940	15	14,100
④	Perfil L 2" ≠3/16"	560	5	2,800
				18,925



MODULO II				
POS	Material	Long. [mm]	Cant.	Long. Total [m]
①	Perfil C 160x60x20 ≠3.2	3800	4	15,200
				15,200
②	Perfil L 2" ≠3/16"	1090	16	17,440
③	Perfil L 2" ≠3/16"	304	10	3,040
④	Perfil L 2" ≠3/16"	549	2	1,098
				21,578

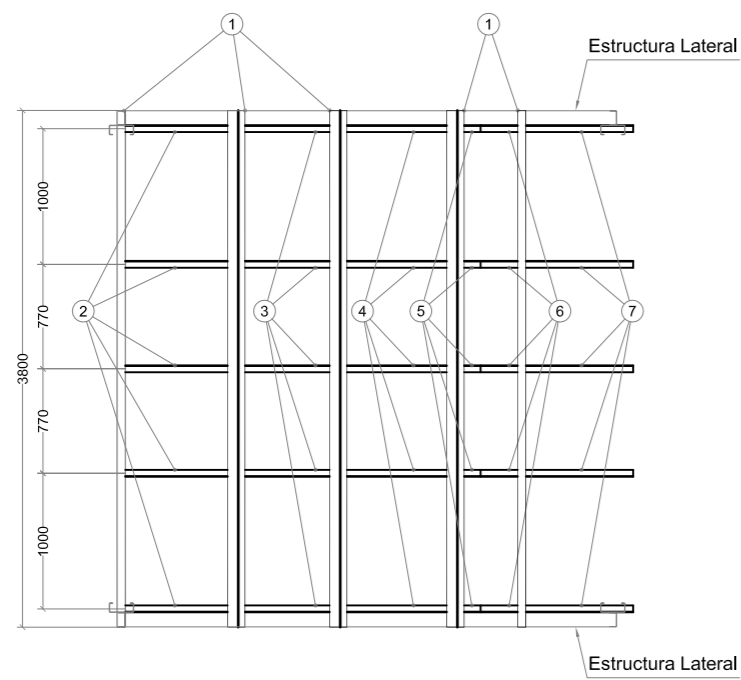


MODULO III				
POS	Material	Long. [mm]	Cant.	Long. Total [m]
①	Perfil C 160x60x20 ≠3.2	3800	5	19,000
				19,000
②	Perfil L 2" ≠3/16"	405	5	2,025
③	Perfil L 2" ≠3/16"	940	15	14,100
④	Perfil L 2" ≠3/16"	560	5	2,800
				18,925

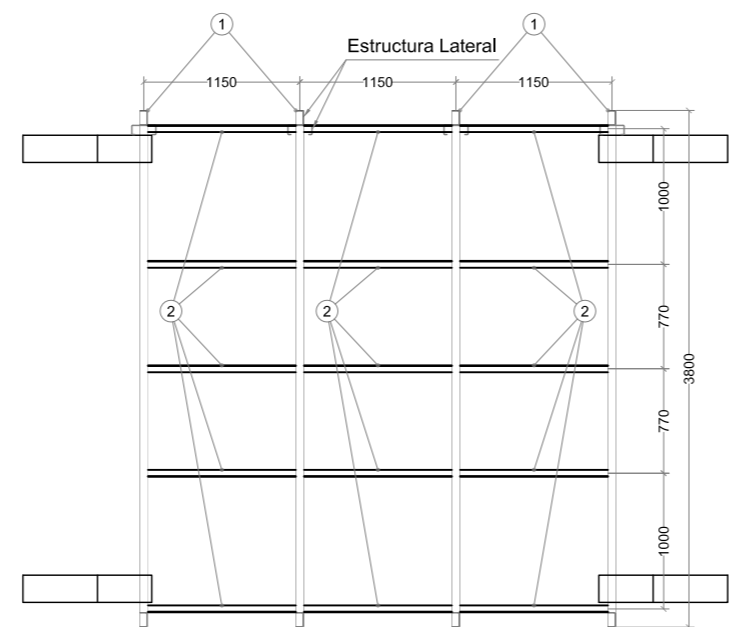


MODULO IV				
POS	Material	Long. [mm]	Cant.	Long. Total [m]
①	Perfil C 160x60x20 ≠3.2	3800	2	7,600
				7,600
②	Perfil L 2" ≠3/16"	88	5	0,440
③	Perfil L 2" ≠3/16"	830	5	4,150
④	Perfil L 2" ≠3/16"	940	5	4,700
				9,290

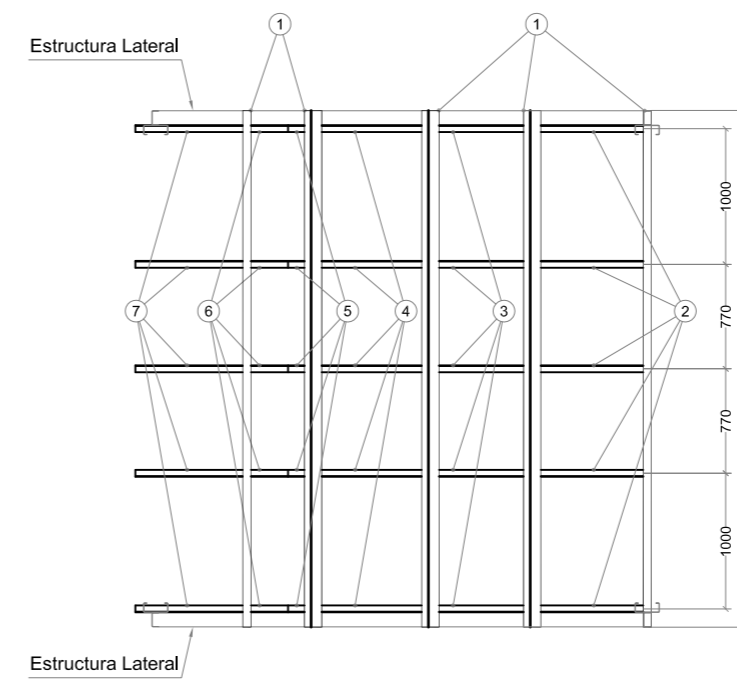
PISO



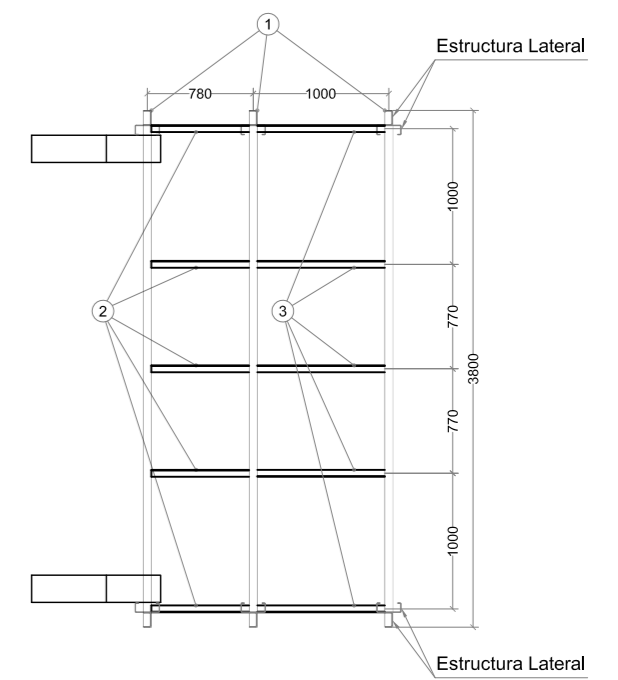
MODULO I				
POS	Material	Long. [mm]	Cant.	Long. Total [m]
①	Perfil C 160x60x20 ≠3.2	3800	5	19,000
				19,000
②	Perfil L 2" ≠3/16"	779	5	3,895
③	Perfil L 2" ≠3/16"	807	5	4,035
④	Perfil L 2" ≠3/16"	940	5	4,700
⑤	Perfil L 2" ≠3/16"	212	5	1,060
⑥	Perfil L 2" ≠3/16"	287	5	1,435
⑦	Perfil L 2" ≠3/16"	791	5	3,955
				19,080



MODULO II				
POS	Material	Long. [mm]	Cant.	Long. Total [m]
①	Perfil C 160x60x20 ≠3.2	3800	4	15,200
				15,200
②	Perfil L 2" ≠3/16"	1090	15	16,350
				16,350



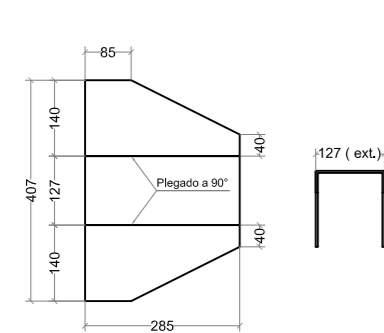
MODULO III				
POS	Material	Long. [mm]	Cant.	Long. Total [m]
①	Perfil C 160x60x20 ≠3.2	3800	5	19,000
				19,000
②	Perfil L 2" ≠3/16"	779	5	3,895
③	Perfil L 2" ≠3/16"	807	5	4,035
④	Perfil L 2" ≠3/16"	940	5	4,700
⑤	Perfil L 2" ≠3/16"	212	5	1,060
⑥	Perfil L 2" ≠3/16"	287	5	1,435
⑦	Perfil L 2" ≠3/16"	791	5	3,955
				19,080



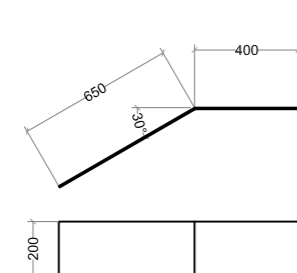
MODULO IV				
POS	Material	Long. [mm]	Cant.	Long. Total [m]
①	Perfil C 160x60x20 ≠3.2	3800	3	11,400
				11,400
②	Perfil L 2" ≠3/16"	720	5	3,600
③	Perfil L 2" ≠3/16"	940	5	4,700
				8,300

CHAPAS

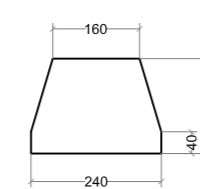
MENSULA
Chapa ≠3/16"
Cantidad: 38



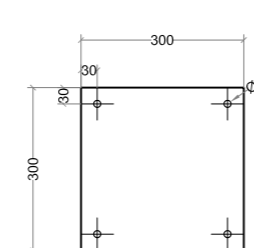
REFUERZO
Chapa Plegada BW18
ancho: 200mm
Cantidad: 20



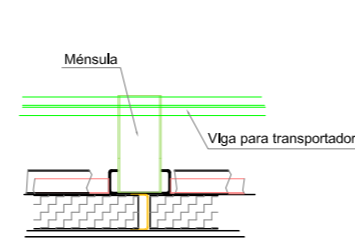
ESCUADRA
Chapa ≠1/4"
Cantidad: 16



BASE
Chapa ≠3/8"
Cantidad: 8



DETALLE MENSULAS



CHAPAS

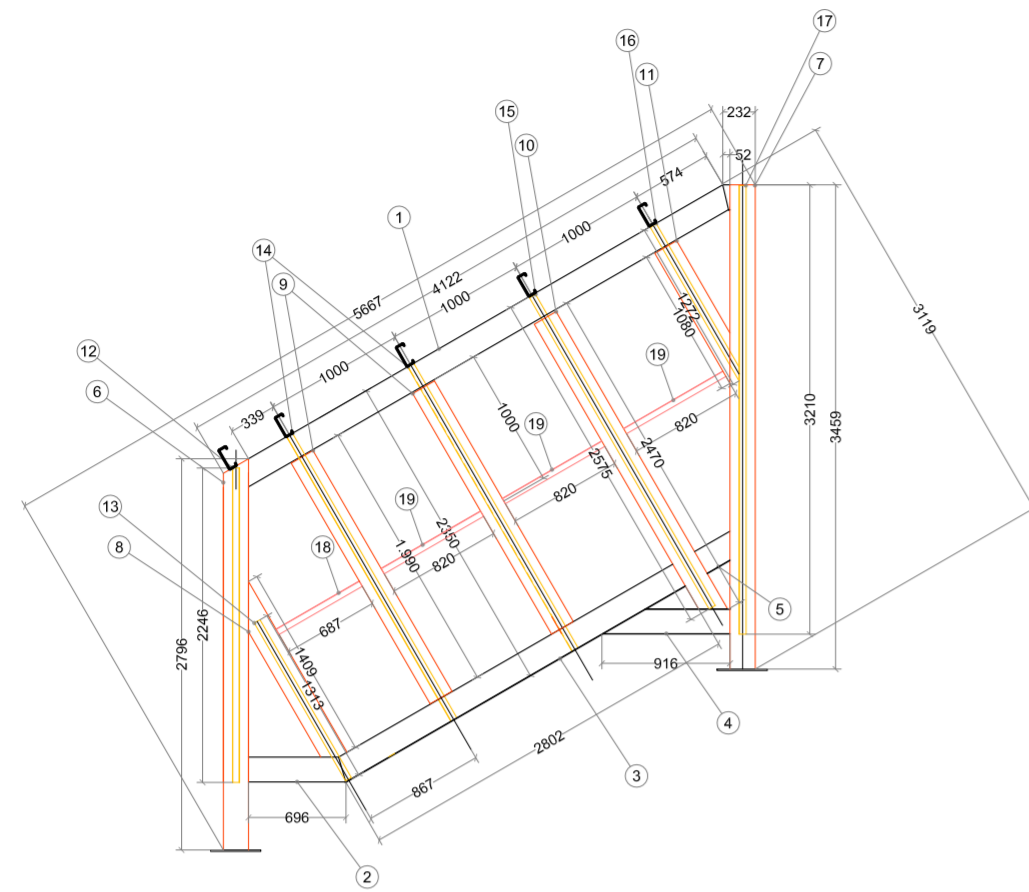
POS	Material	Long. [mm]	Cant.	Long. Total [m]
A	Chapa 16" ≠3/16"	285	38	10,830
B	Chapa BW18 (ancho 200mm)	1050	20	21,000
C	Chapa 7" ≠1/4"	240	16	3,840
D	Chapa 12" ≠3/8"	300	8	2,400

△					
△					
△					
REV.	DESCRIPCION	DIBUJO	PROYECTO	APROBO	FECHA
	CLIENTE: GRAMSAC				
	OBRA: INSTALACION CATAFORESIS				
	TITULO: HORNO DE SECADO - Fabricación Estructura				
DIBUJO: AAR	PLANO N°: M-06	REEMPLAZA A:	ESCALA 1:50		
PROYECTO: LRS					
APROBO: JT					
FECHA: 17/04/2007					
LA FIRMA SE RESERVA EL DERECHO DE ESTE ELABORADO, PROHIBIENDO SU REPRODUCCION PARCIAL O TOTAL, SIN PREVIA AUTORIZACION ESCRITA.					

FABRICACION ESTRUCTURA METALICA MODULOS

LATERAL

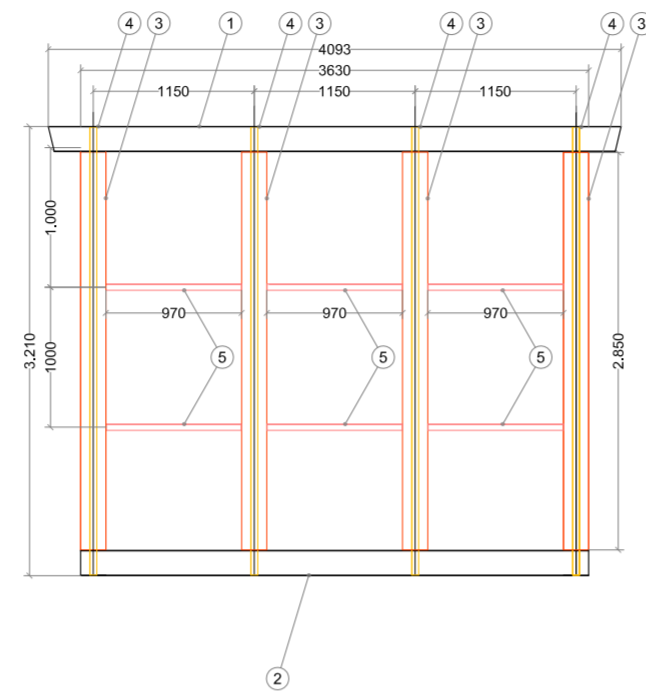
MODULO I



MODULO I				
POS	Material	Long. [mm]	Cant.	Long. Total [m]
1	Perfil C 180x70x25 ≠ 3.2	3960	1	3,960
2	Perfil C 180x70x25 ≠ 3.2	696	1	0,696
3	Perfil C 180x70x25 ≠ 3.2	2802	1	2,802
4	Perfil C 180x70x25 ≠ 3.2	916	1	0,916
5	Perfil C 180x70x25 ≠ 3.2	292	1	0,292
6	Perfil C 180x70x25 ≠ 3.2	2796	1	2,796
7	Perfil C 180x70x25 ≠ 3.2	3459	1	3,459
8	Perfil C 180x70x25 ≠ 3.2	1410	1	1,410
9	Perfil C 180x70x25 ≠ 3.2	1990	2	3,980
10	Perfil C 180x70x25 ≠ 3.2	2470	1	2,470
11	Perfil C 180x70x25 ≠ 3.2	1080	1	1,080
				23,861
12	Perfil U 105x50 ≠ 2.5	2246	1	2,246
13	Perfil U 105x50 ≠ 2.5	1313	1	1,313
14	Perfil U 105x50 ≠ 2.5	2350	2	4,700
15	Perfil U 105x50 ≠ 2.5	2575	1	2,575
16	Perfil U 105x50 ≠ 2.5	1272	1	1,272
17	Perfil U 105x50 ≠ 2.5	3210	1	3,210
				15,316
18	Perfil L 1 3/4" ≠ 1/8"	687	1	0,687
19	Perfil L 1 3/4" ≠ 1/8"	820	3	2,460
				3,147

NOTA: Materiales correspondientes a UN LATERAL.

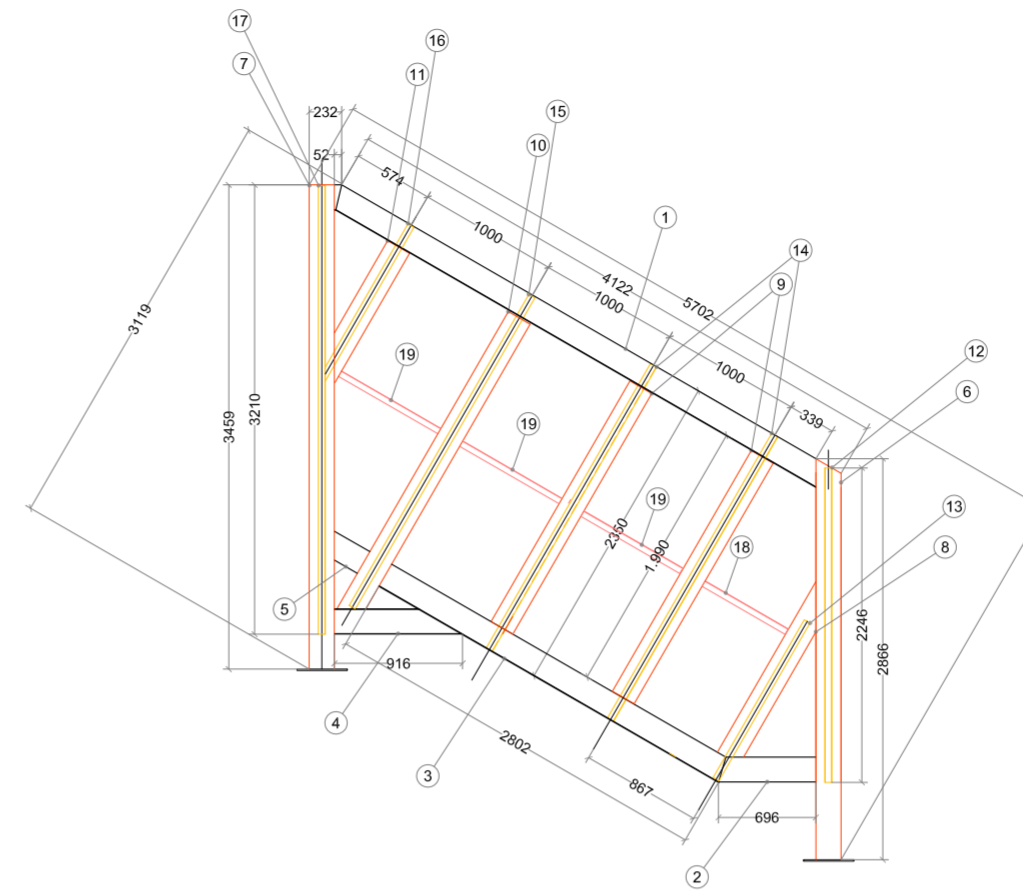
MODULO II



MODULO II				
POS	Material	Long. [mm]	Cant.	Long. Total [m]
1	Perfil C 180x70x25 ≠ 3.2	4093	1	4,093
2	Perfil C 180x70x25 ≠ 3.2	3630	1	3,630
3	Perfil C 180x70x25 ≠ 3.2	2850	4	11,400
				19,123
4	Perfil U 105x50 ≠ 2.5	3210	4	12,840
				12,840
5	Perfil L 1 3/4" ≠ 1/8"	970	6	5,820
				5,820

NOTA: Materiales correspondientes a UN LATERAL.

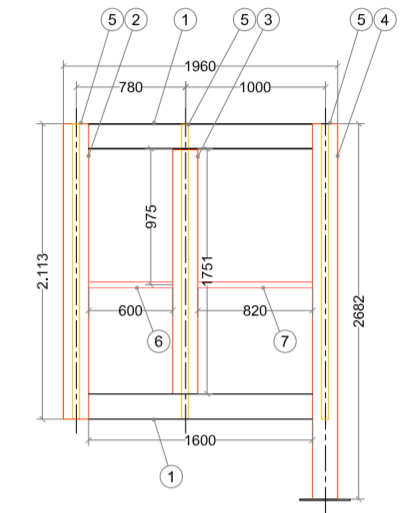
MODULO III



MODULO III				
POS	Material	Long. [mm]	Cant.	Long. Total [m]
1	Perfil C 180x70x25 ≠ 3.2	3960	1	3,960
2	Perfil C 180x70x25 ≠ 3.2	696	1	0,696
3	Perfil C 180x70x25 ≠ 3.2	2802	1	2,802
4	Perfil C 180x70x25 ≠ 3.2	916	1	0,916
5	Perfil C 180x70x25 ≠ 3.2	292	1	0,292
6	Perfil C 180x70x25 ≠ 3.2	2796	1	2,796
7	Perfil C 180x70x25 ≠ 3.2	3459	1	3,459
8	Perfil C 180x70x25 ≠ 3.2	1410	1	1,410
9	Perfil C 180x70x25 ≠ 3.2	1990	2	3,980
10	Perfil C 180x70x25 ≠ 3.2	2470	1	2,470
11	Perfil C 180x70x25 ≠ 3.2	1080	1	1,080
				23,861
12	Perfil U 105x50 ≠ 2.5	2246	1	2,246
13	Perfil U 105x50 ≠ 2.5	1313	1	1,313
14	Perfil U 105x50 ≠ 2.5	2350	2	4,700
15	Perfil U 105x50 ≠ 2.5	2575	1	2,575
16	Perfil U 105x50 ≠ 2.5	1272	1	1,272
17	Perfil U 105x50 ≠ 2.5	3210	1	3,210
				15,316
18	Perfil L 1 3/4" ≠ 1/8"	687	1	0,687
19	Perfil L 1 3/4" ≠ 1/8"	820	3	2,460
				3,147

NOTA: Materiales correspondientes a UN LATERAL.

MODULO IV



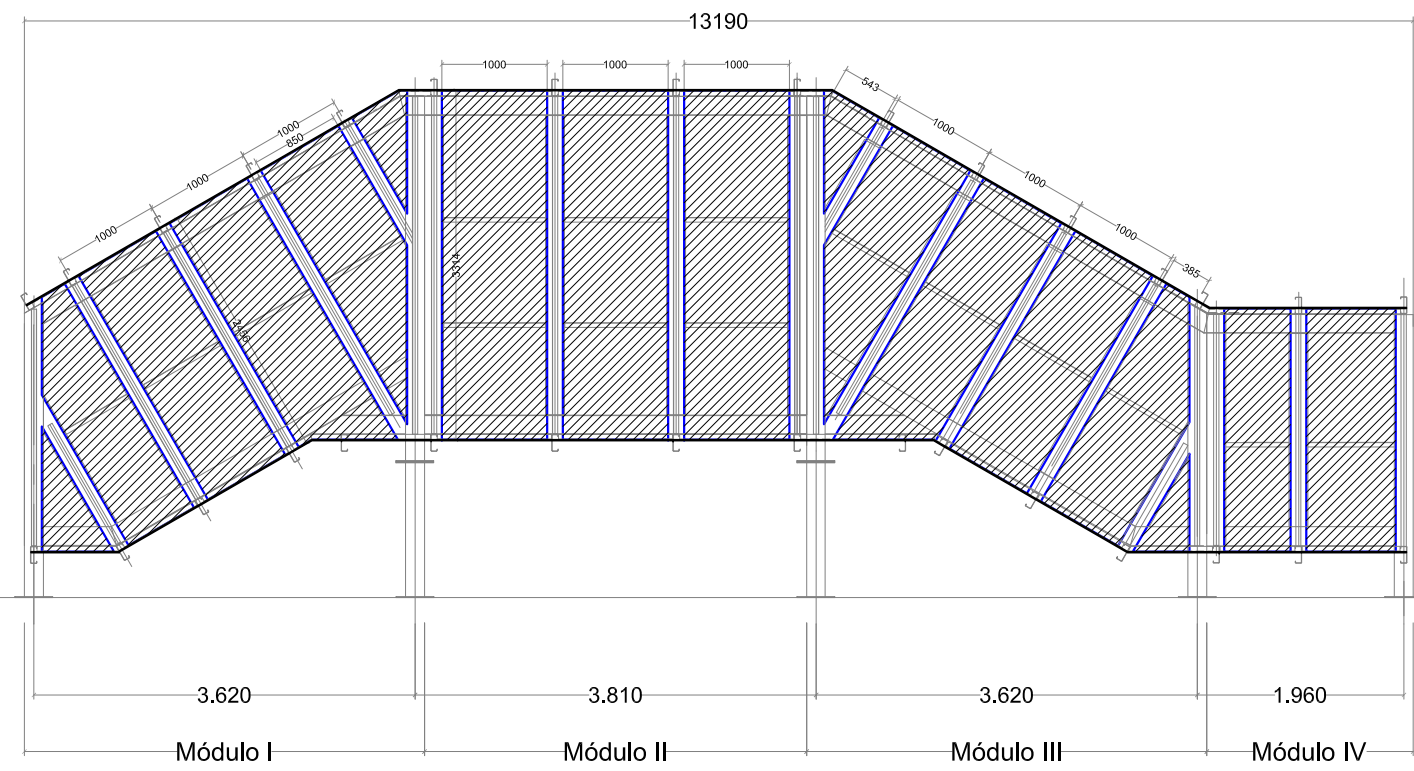
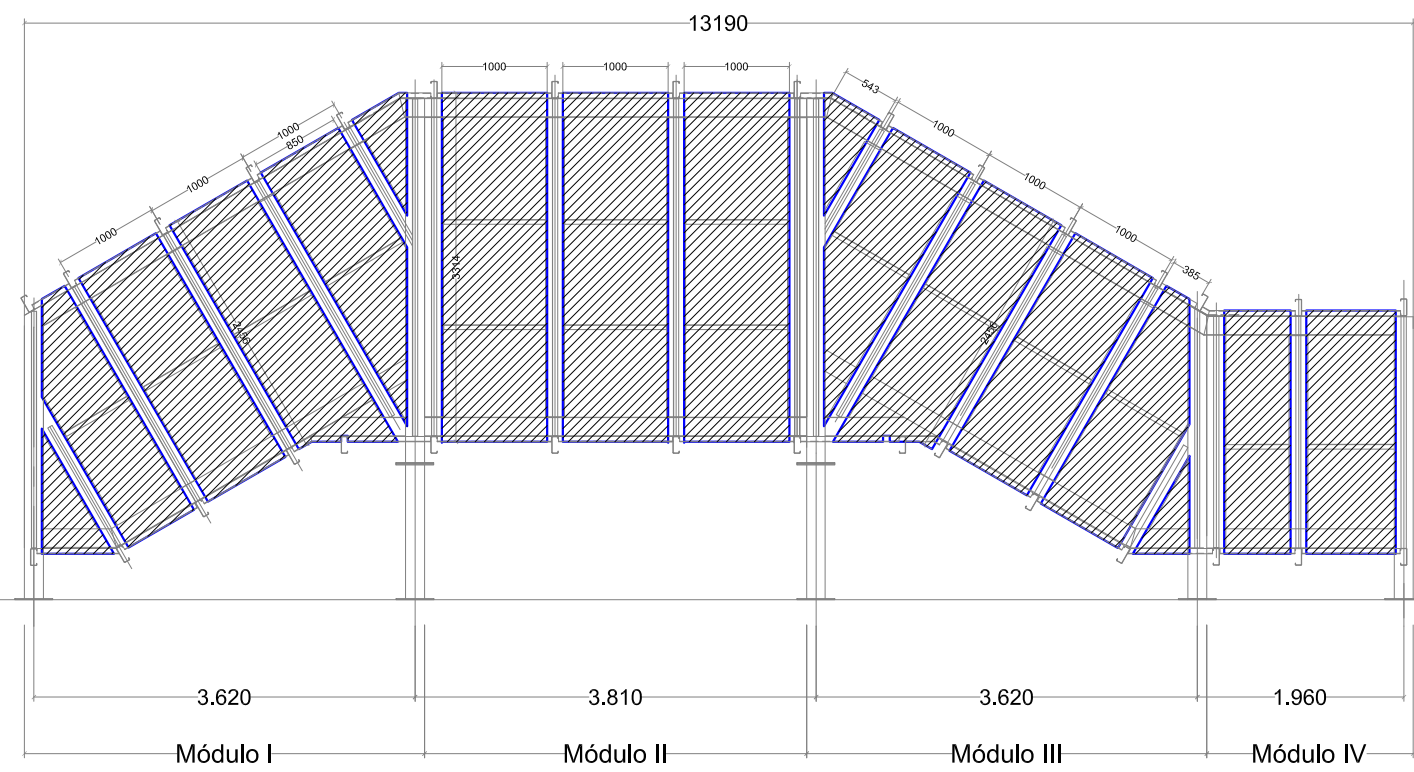
MODULO IV				
POS	Material	Long. [mm]	Cant.	Long. Total [m]
1	Perfil C 180x70x25 ≠ 3.2	1600	2	3,200
2	Perfil C 180x70x25 ≠ 3.2	2113	1	2,113
3	Perfil C 180x70x25 ≠ 3.2	1751	1	1,751
4	Perfil C 180x70x25 ≠ 3.2	2665	1	2,665
				9,729
5	Perfil U 105x50 ≠ 2.5	2113	3	6,339
				6,339
6	Perfil L 1 3/4" ≠ 1/8"	600	1	0,600
7	Perfil L 1 3/4" ≠ 1/8"	820	1	0,820
				1,420

NOTA: Materiales correspondientes a UN LATERAL.

△					
△					
△					
REV.	DESCRIPCION	DIBUJO	PROYECTO	APROBO	FECHA
TAIBI S.R.L. INGENIERIA - INSTALACIONES		CLIENTE: CRAMSAC			
		OBRA: INSTALACION CATAFORESIS			
		TITULO: HORNO DE SECADO - Fabricación Estructura			
DIBUJO: AAR PROYECTO: LRS APROBO: JT FECHA: 17/04/2007		PLANO N°: M-06		REEMPLAZA A: ESCALA 1:50 REV.: △	
LA FIRMA SE RESERVA EL DERECHO DE ESTE ELABORADO, PROHIBIENDO SU REPRODUCCION PARCIAL O TOTAL, SIN PREVIA AUTORIZACION ESCRITA.					

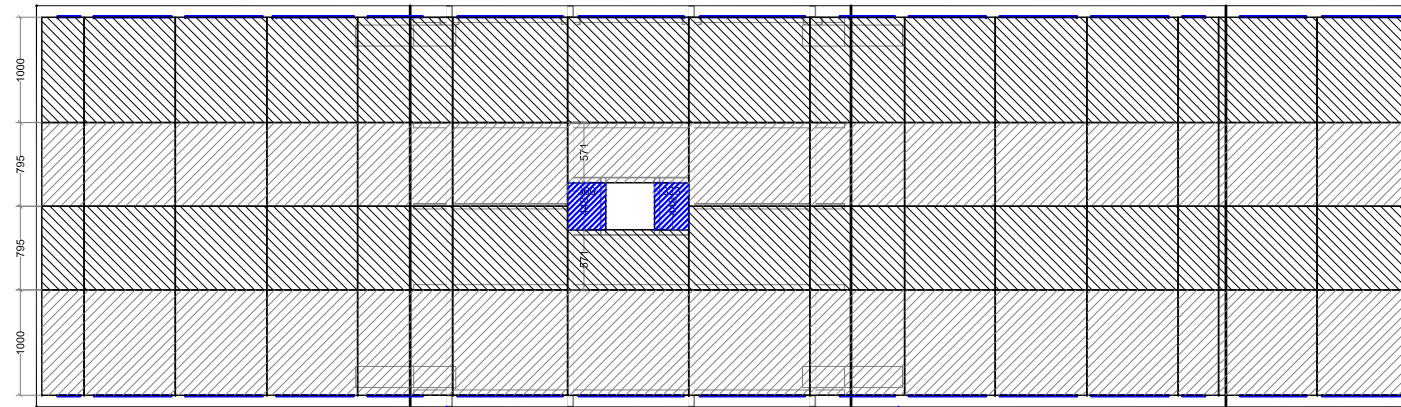
CHAPA REVESTIMIENTO INTERIOR (BW 18)

Chapa de Revestimiento INTERIOR - 2 LATERALES

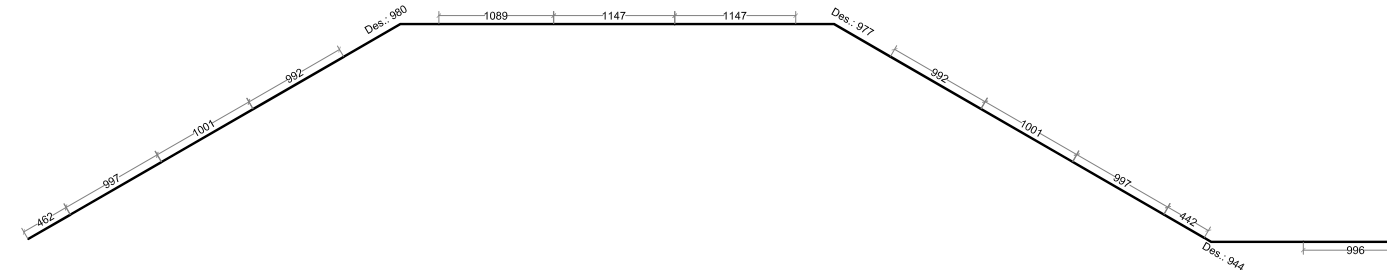


Chapa de Revestimiento INTERIOR - TECHO

Lateral Interior

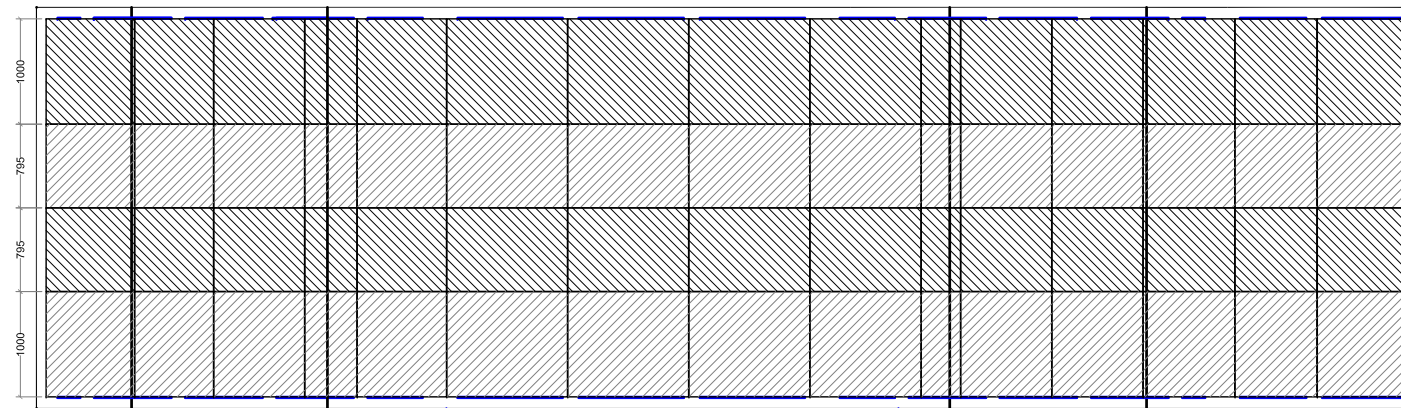


Lateral Interior

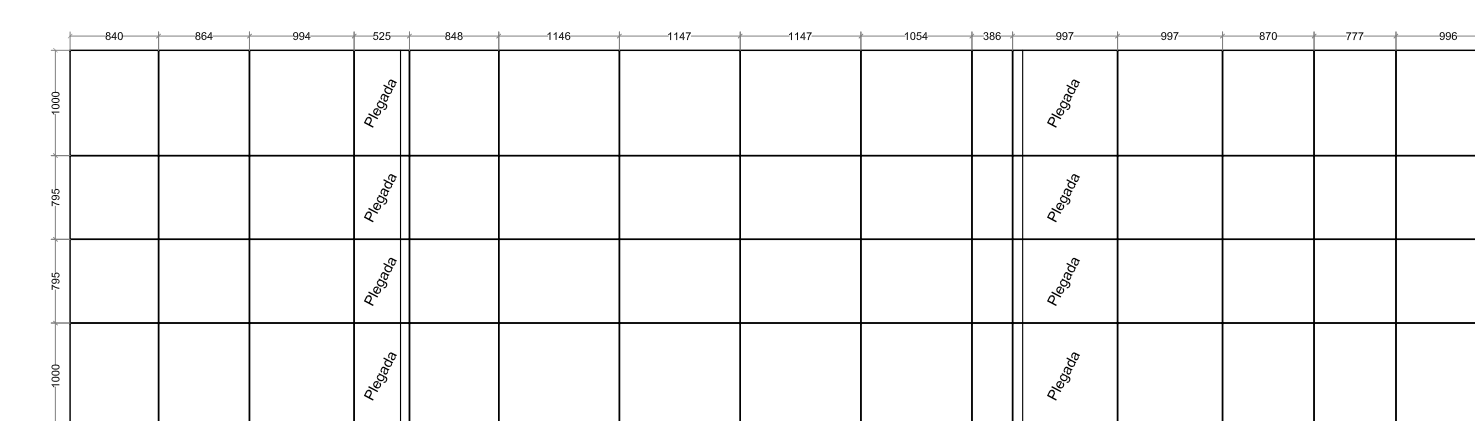
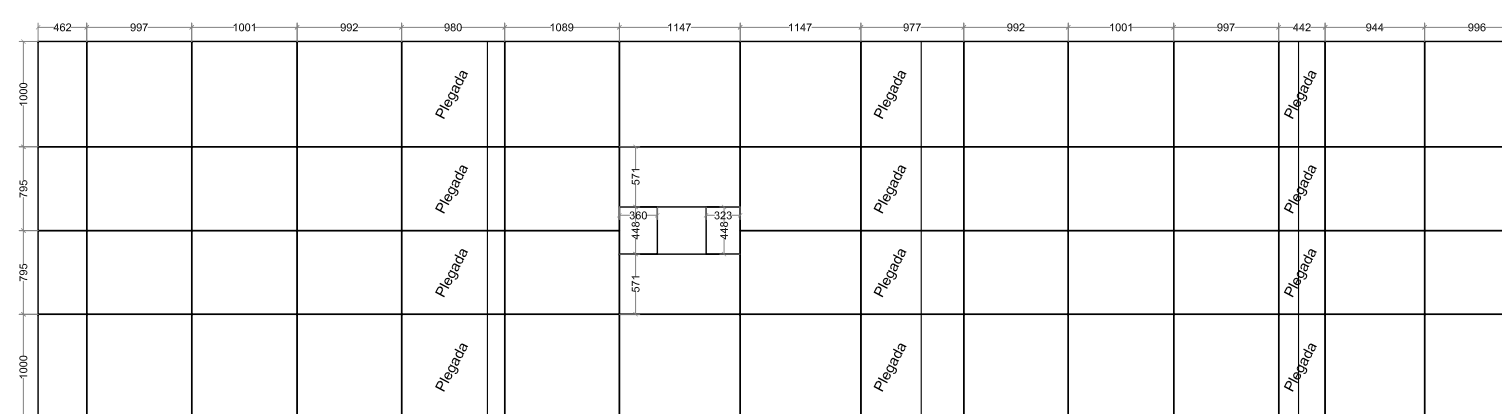
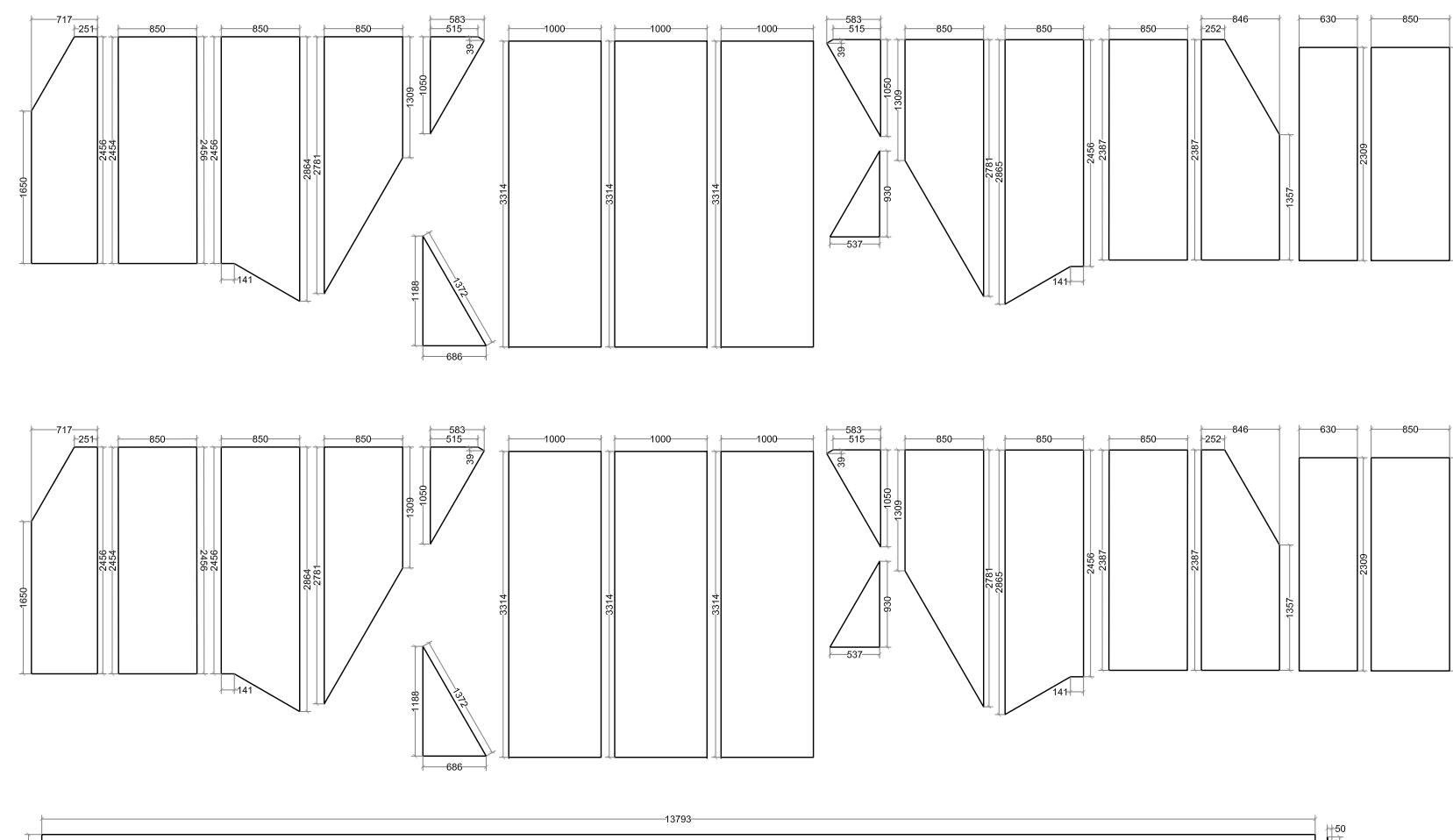
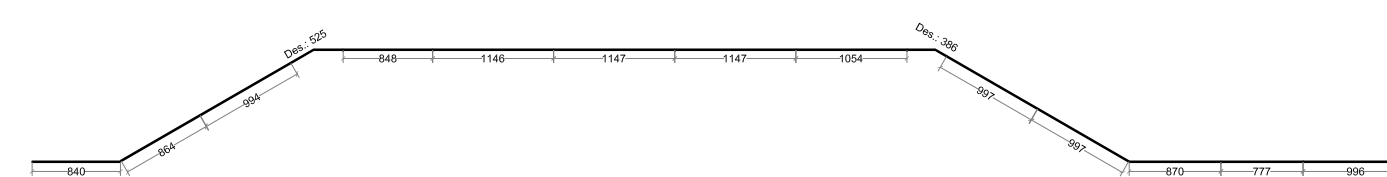


Chapa de Revestimiento INTERIOR - PISO

Lateral Interior



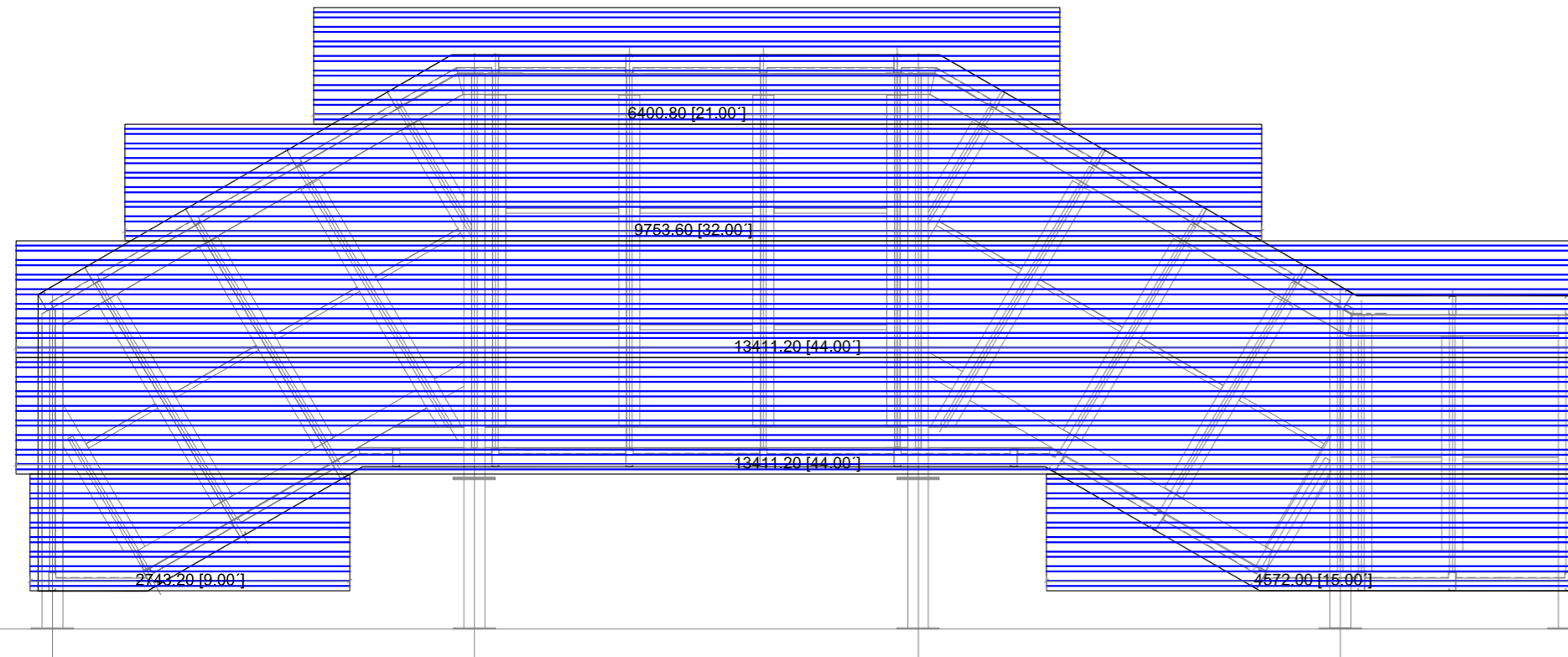
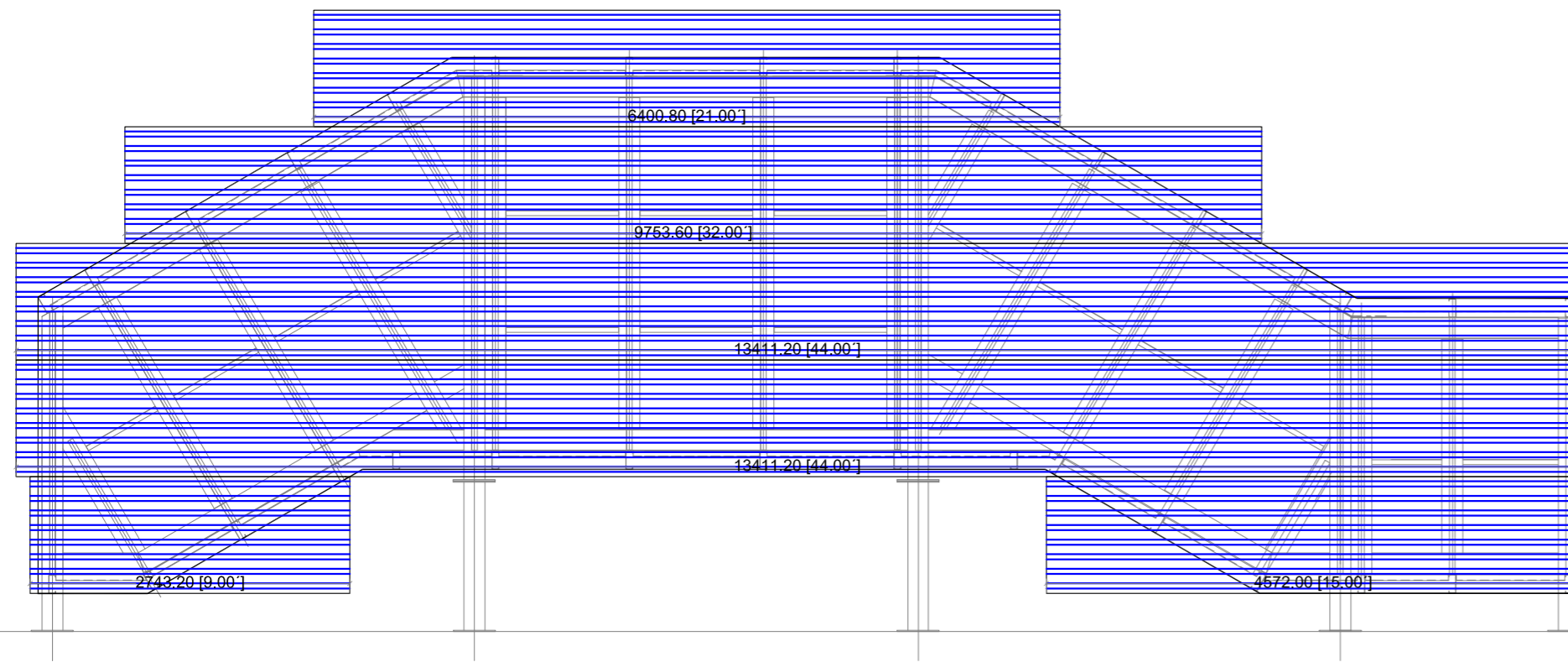
Lateral Interior



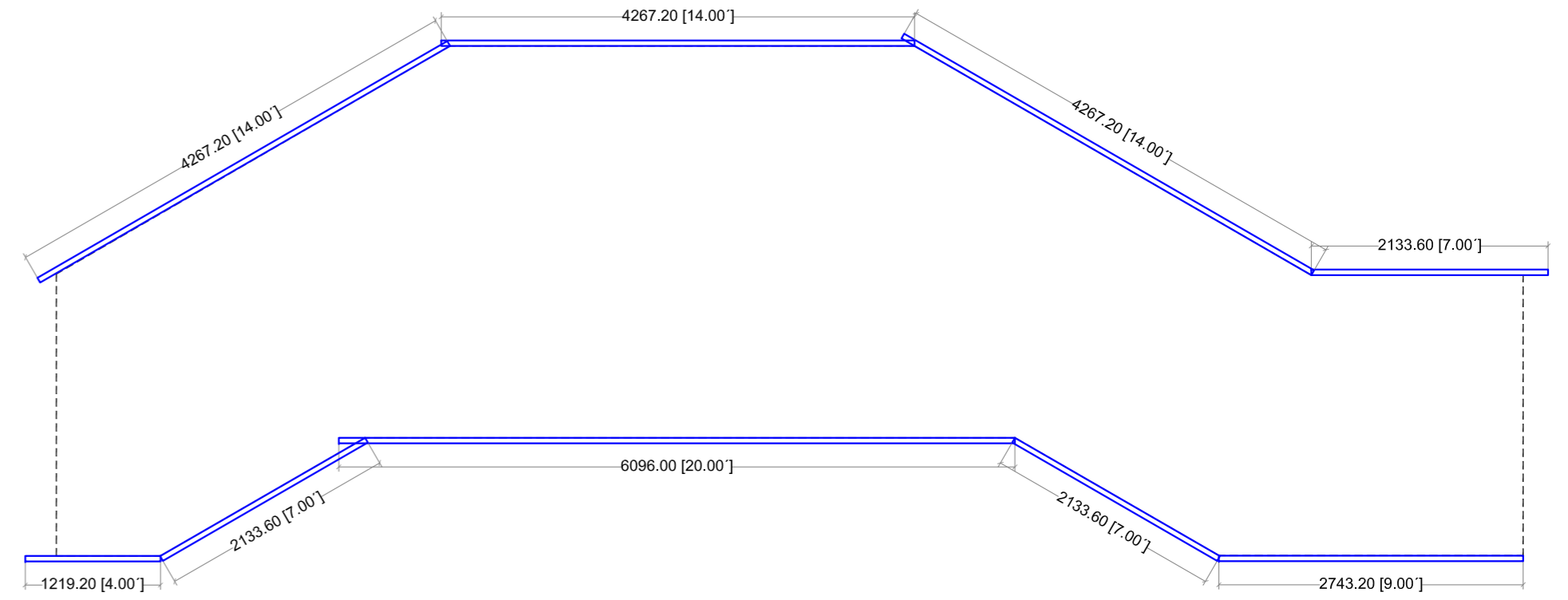
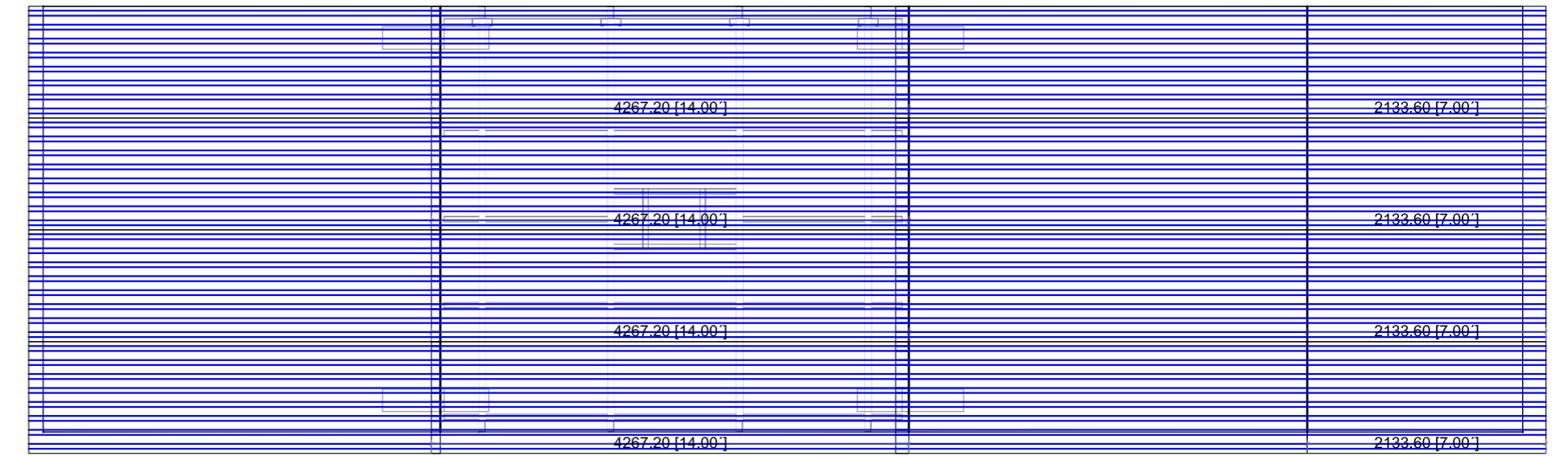
△					
△					
△					
REV.	DESCRIPCION	DIBUJO	PROYECTO	APROBO	FECHA
	CLIENTE: CRAMSAC				
	OBRA: INSTALACION CATAFORESIS				
	TITULO: HORNO DE SECADO - Revestimiento Interior				
DIBUJO: AAR	PLANO N°:	REEMPLAZA A:	ESCALA 1:50		
PROYECTO: LRS	M-07				
APROBO: JT					
FECHA: 10/05/2007					
LA FIRMA SE RESERVA EL DERECHO DE ESTE ELABORADO, PROHIBIENDO SU REPRODUCCION PARCIAL O TOTAL, SIN PREVIA AUTORIZACION ESCRITA.					

CHAPA REVESTIMIENTO EXTERIOR (CINCALUN)

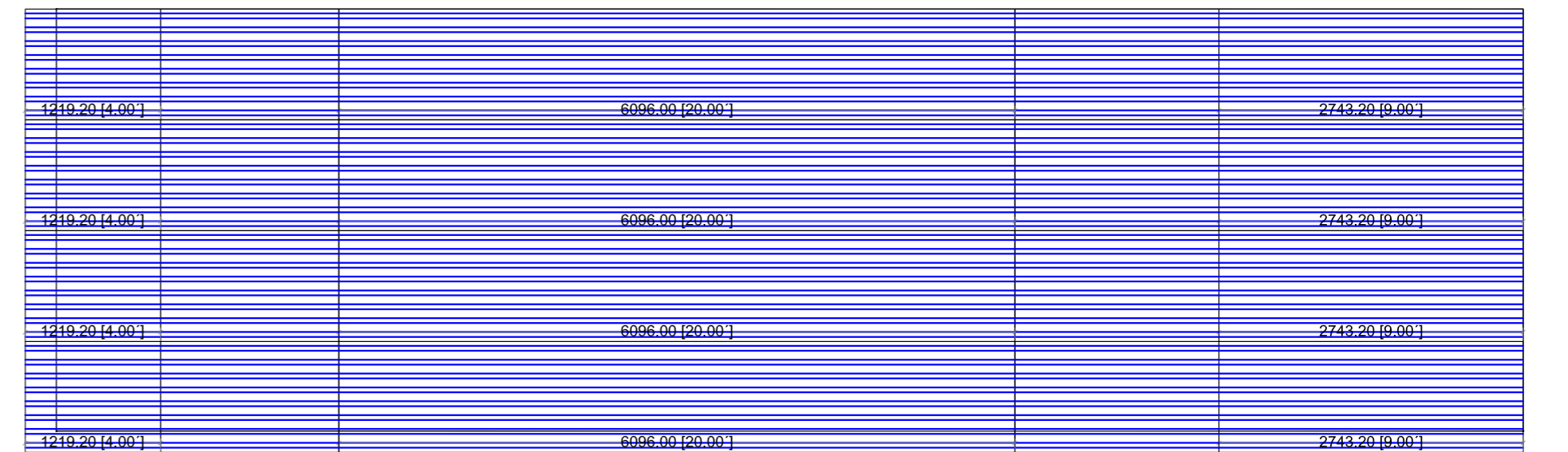
Chapa de Revestimiento EXTERIOR - 2 LATERALES



Chapa de Revestimiento EXTERIOR - TECHO



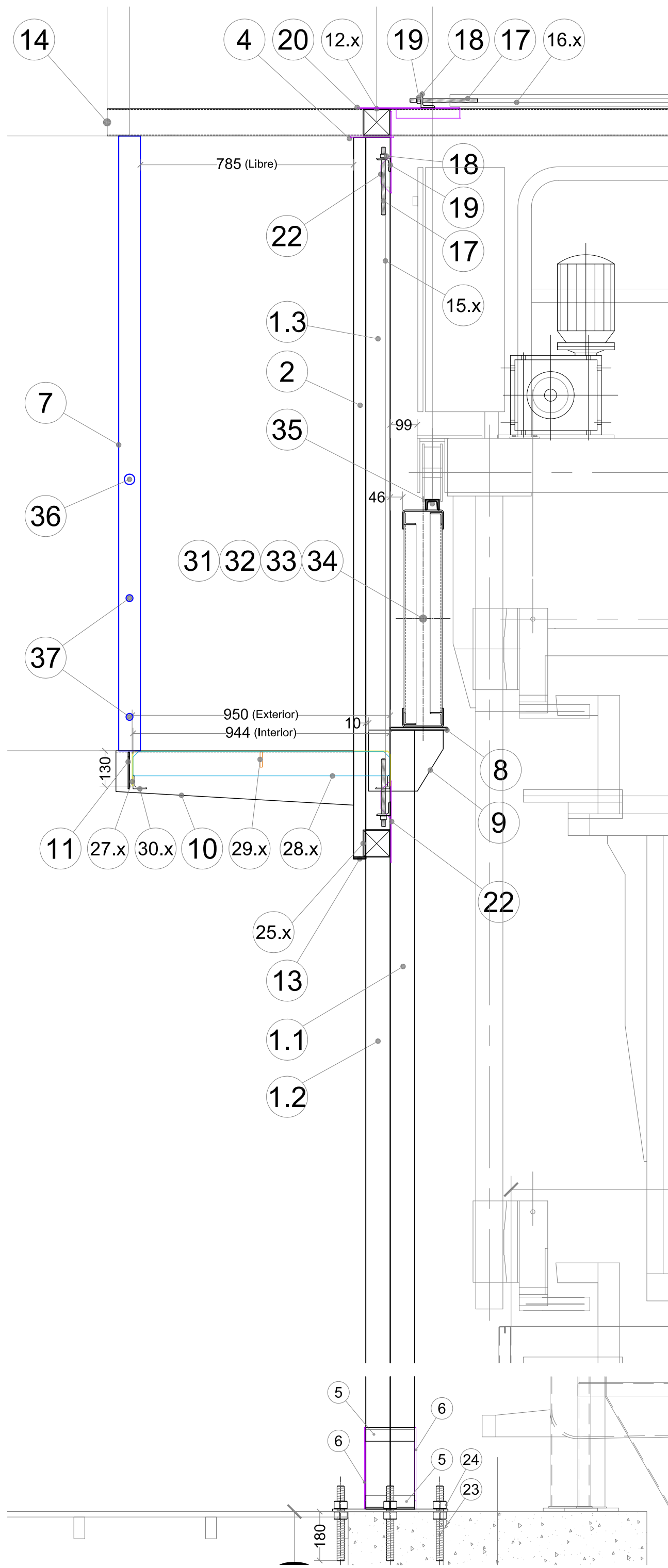
Chapa de Revestimiento EXTERIOR - PISO



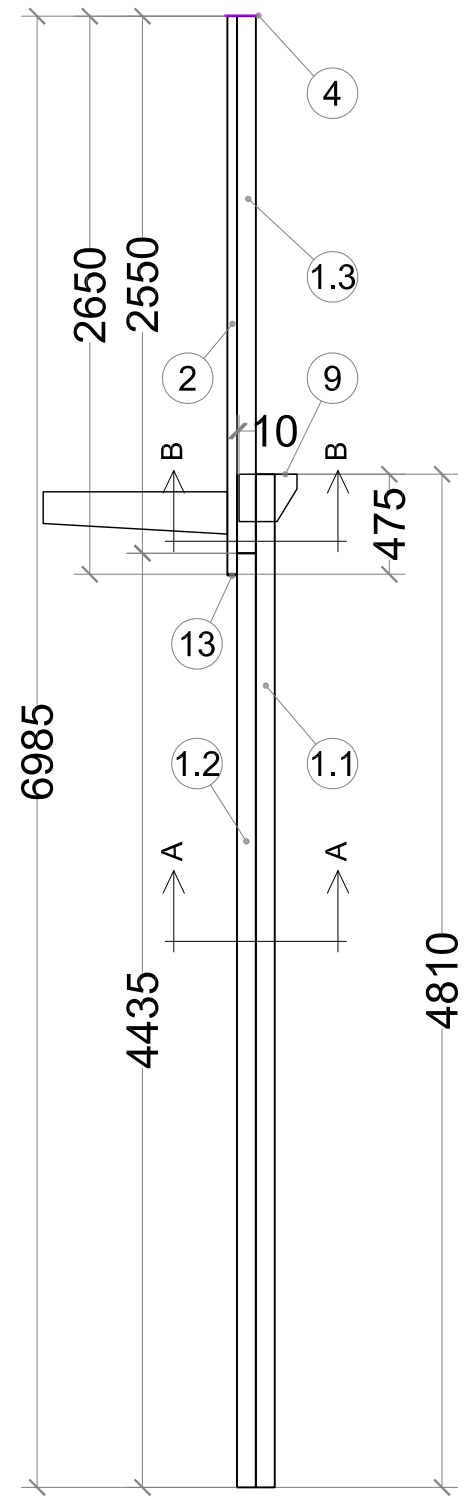
REV.	DESCRIPCION	DIBUJO	PROYECTO	APROBO	FECHA
△					
△					
△					
△					

TAIBI S.R.L. INGENIERIA - INSTALACIONES		CLIENTE: GRAMSAC			
DIBUJO: AAR		OBRA: INSTALACION CATAFORESIS			
PROYECTO: LRS		TITULO: HORNO DE SECADO - Revestimiento Exterior			
APROBO: JT		PLANO N°: M-08		REEMPLAZA A:	
FECHA: 15/05/2007				ESCALA 1:50	
				REV.: △	

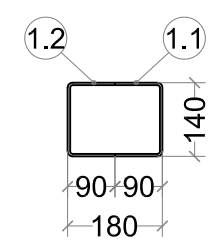
LA FIRMA SE RESERVA EL DERECHO DE ESTE ELABORADO, PROHIBIENDO SU REPRODUCCION PARCIAL O TOTAL, SIN PREVIA AUTORIZACION ESCRITA.



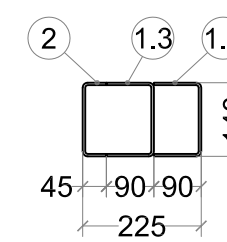
Columnas Principales
Chapa #3/16"
Cant.: 18



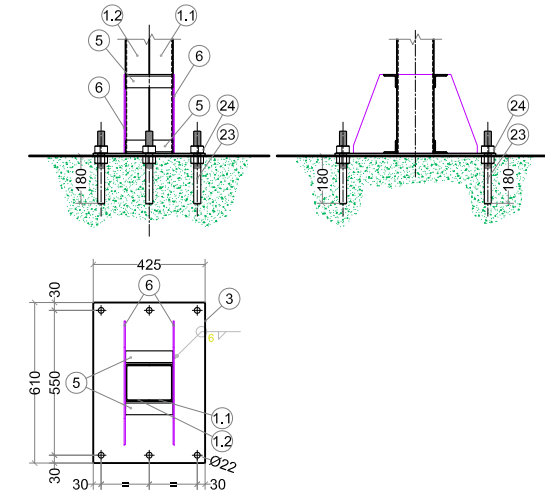
Corte A-A



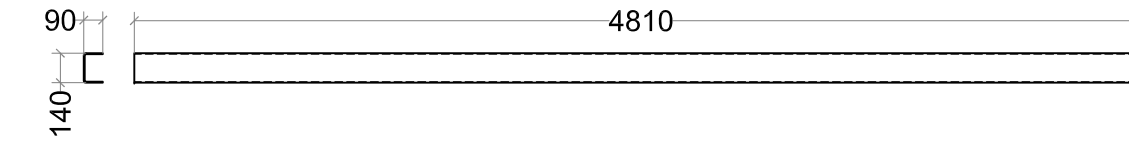
Corte B-B



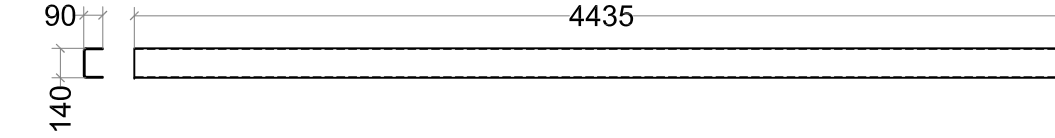
Bases Columnas Principales
Cant.: 18



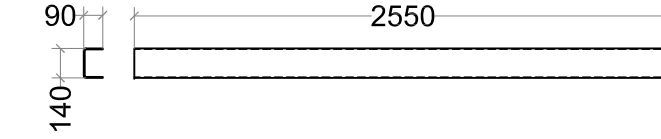
Pos.: 1.1
Chapa #3/16"
Cant.: 18
Desarrollo: 312mm



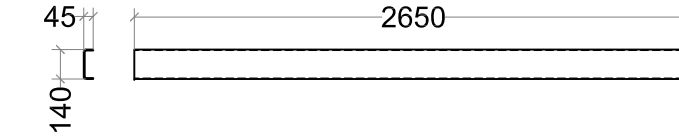
Pos.: 1.2
Chapa #3/16"
Cant.: 18
Desarrollo: 312mm



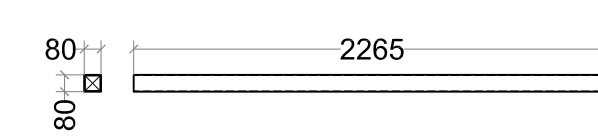
Pos.: 1.3
Chapa #3/16"
Cant.: 18
Desarrollo: 312mm



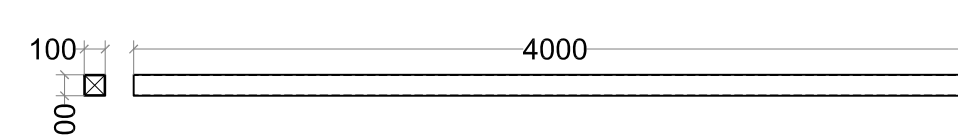
Pos.: 2
Chapa #3/16"
Cant.: 18
Desarrollo: 222mm



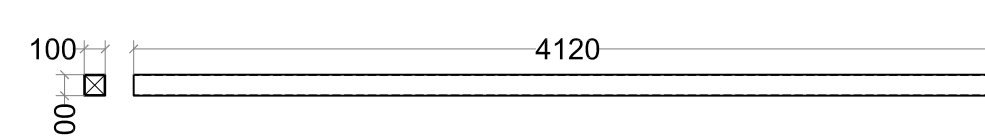
Pos.: 7
Tubo Estructural Cuadr. 80x80 #2mm
Cant.: 18



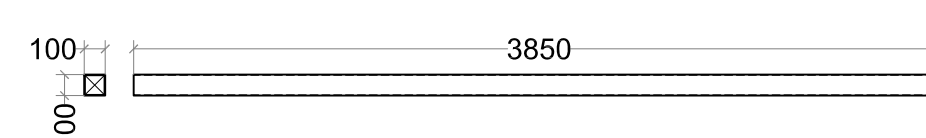
Pos.: 12.1
Tubo Estructural Cuadr. 100x100 #1/8"
Cant.: 2



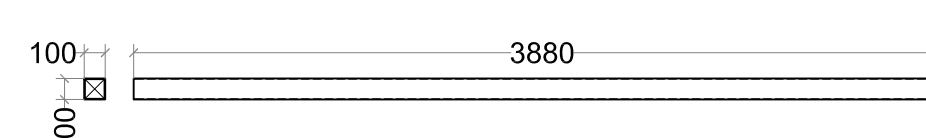
Pos.: 12.2
Tubo Estructural Cuadr. 100x100 #1/8"
Cant.: 2



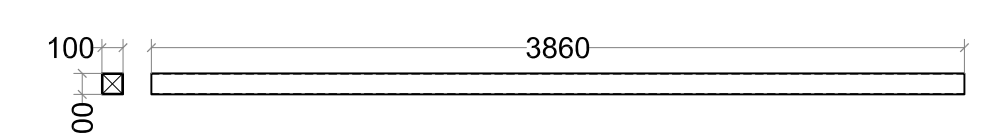
Pos.: 12.3
Tubo Estructural Cuadr. 100x100 #1/8"
Cant.: 2



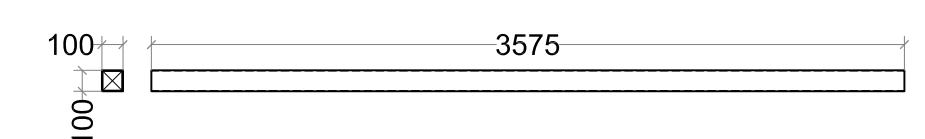
Pos.: 12.4
Tubo Estructural Cuadr. 100x100 #1/8"
Cant.: 2



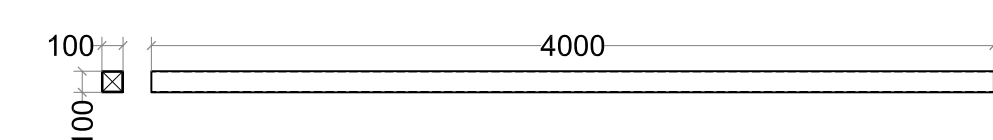
Pos.: 12.5
Tubo Estructural Cuadr. 100x100 #1/8"
Cant.: 2



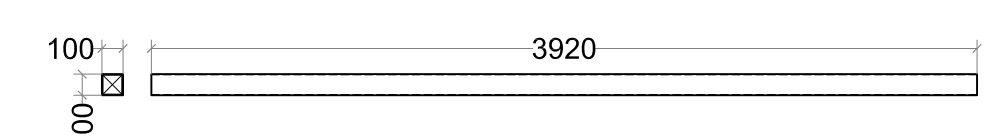
Pos.: 12.6
Tubo Estructural Cuadr. 100x100 #1/8"
Cant.: 2



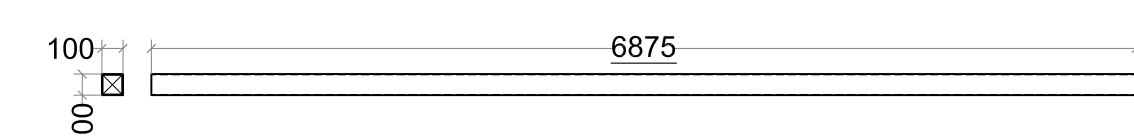
Pos.: 12.7
Tubo Estructural Cuadr. 100x100 #1/8"
Cant.: 2



Pos.: 12.8
Tubo Estructural Cuadr. 100x100 #1/8"
Cant.: 2



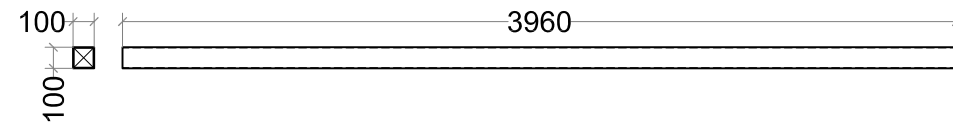
Pos.: 14
Tubo Estructural Cuadr. 100x100 #1/8"
Cant.: 9



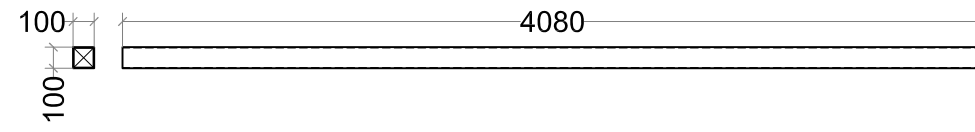
REV.	DESCRIPCION	DIBUJO	PROYECTO	APROBO	FECHA

TAIBI S.R.L. INGENIERIA - INSTALACIONES		CLIENTE: BENTELER S.A.			
DIBUJO: AAR		OBRA: PLANTA CATAFORESIS KTL PLANT			
PROYECTO: LRS		TITULO: FABRICACION ESTRUCTURA PORTICOS TRANSPORTADORES			
APROBO: JT		PLANO N°:	REEMPLAZA A:	ESCALA 1:20 / 1:25	
FECHA: 07/05/2008		PTRAN-02		REV.:	
LA FIRMA SE RESERVA EL DERECHO DE ESTE ELABORADO, PROHIBIENDO SU REPRODUCCION PARCIAL O TOTAL, SIN PREVIA AUTORIZACION ESCRITA.					

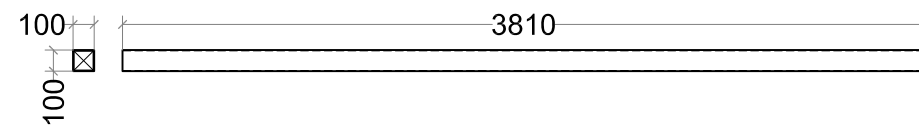
Pos.: 25.1
 Tubo Estructural Cuadr. 100x100 #1/8"
 Cant.: 2



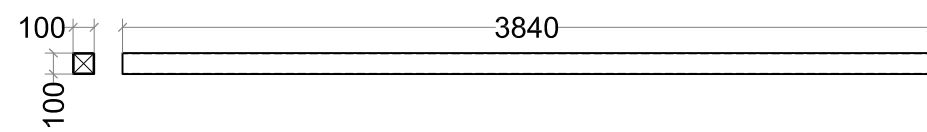
Pos.: 25.2
 Tubo Estructural Cuadr. 100x100 #1/8"
 Cant.: 2



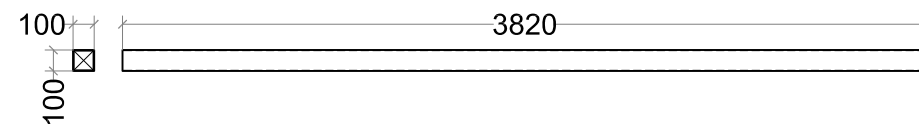
Pos.: 25.3
 Tubo Estructural Cuadr. 100x100 #1/8"
 Cant.: 2



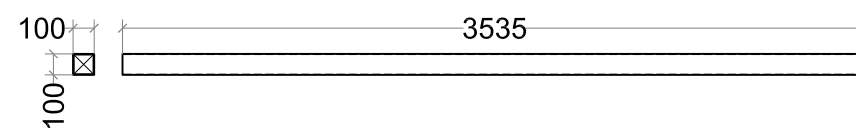
Pos.: 25.4
 Tubo Estructural Cuadr. 100x100 #1/8"
 Cant.: 2



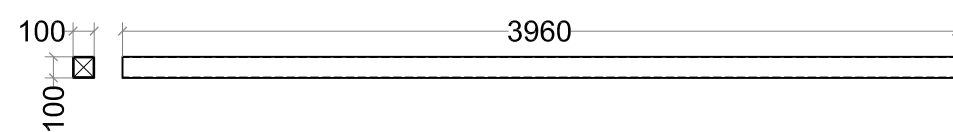
Pos.: 25.5
 Tubo Estructural Cuadr. 100x100 #1/8"
 Cant.: 2



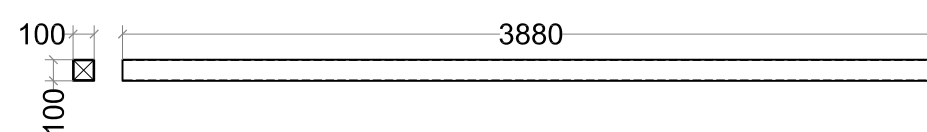
Pos.: 25.6
 Tubo Estructural Cuadr. 100x100 #1/8"
 Cant.: 2



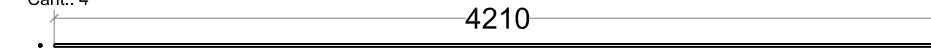
Pos.: 25.7
 Tubo Estructural Cuadr. 100x100 #1/8"
 Cant.: 2



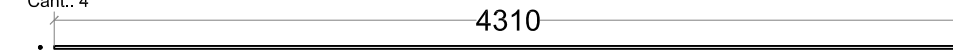
Pos.: 25.8
 Tubo Estructural Cuadr. 100x100 #1/8"
 Cant.: 2



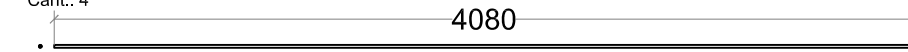
Pos.: 15.1
 Barra Redonda Ø9/16"
 Cant.: 4



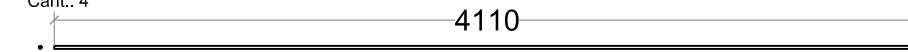
Pos.: 15.2
 Barra Redonda Ø9/16"
 Cant.: 4



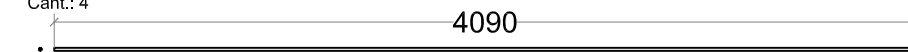
Pos.: 15.3
 Barra Redonda Ø9/16"
 Cant.: 4



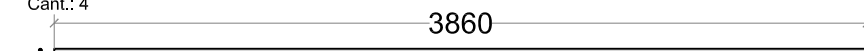
Pos.: 15.4
 Barra Redonda Ø9/16"
 Cant.: 4



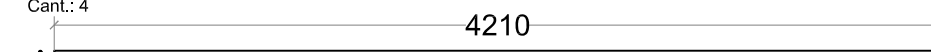
Pos.: 15.5
 Barra Redonda Ø9/16"
 Cant.: 4



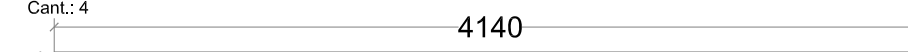
Pos.: 15.6
 Barra Redonda Ø9/16"
 Cant.: 4



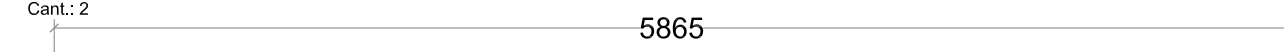
Pos.: 15.7
 Barra Redonda Ø9/16"
 Cant.: 4



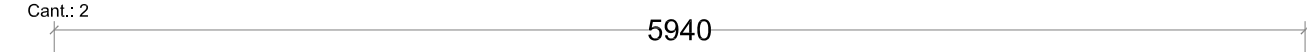
Pos.: 15.8
 Barra Redonda Ø9/16"
 Cant.: 4



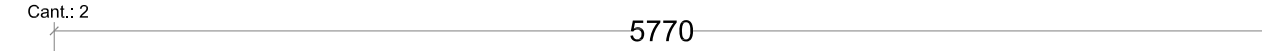
Pos.: 16.1
 Barra Redonda Ø9/16"
 Cant.: 2



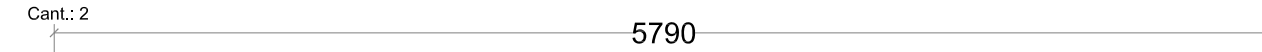
Pos.: 16.2
 Barra Redonda Ø9/16"
 Cant.: 2



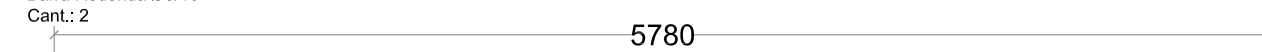
Pos.: 16.3
 Barra Redonda Ø9/16"
 Cant.: 2



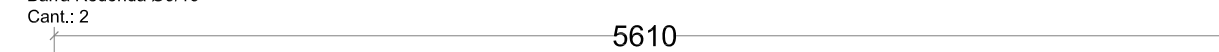
Pos.: 16.4
 Barra Redonda Ø9/16"
 Cant.: 2



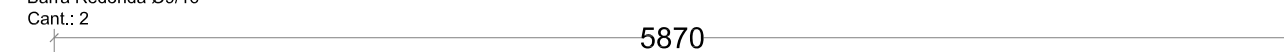
Pos.: 16.5
 Barra Redonda Ø9/16"
 Cant.: 2



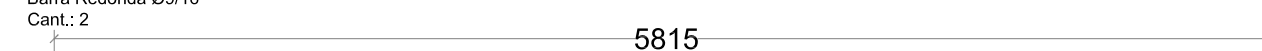
Pos.: 16.6
 Barra Redonda Ø9/16"
 Cant.: 2



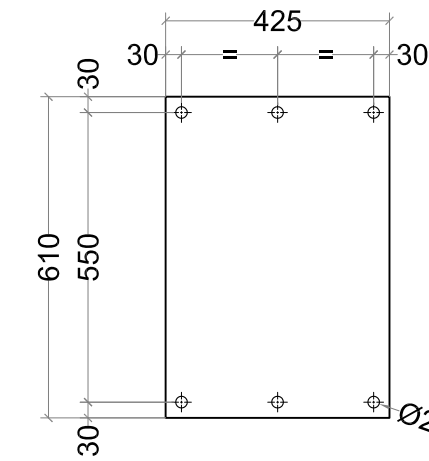
Pos.: 16.7
 Barra Redonda Ø9/16"
 Cant.: 2



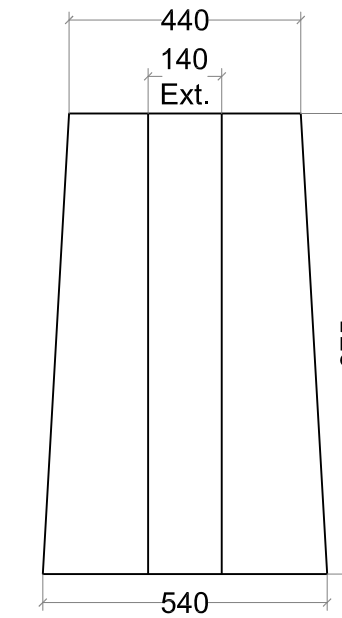
Pos.: 16.8
 Barra Redonda Ø9/16"
 Cant.: 2



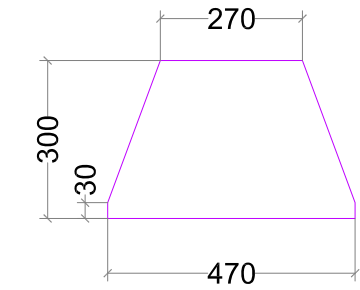
Pos.: 3
 Chapa #3/8"
 Cant.: 18



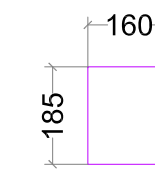
Pos.: 10
 Chapa Plegada #3/16"
 Cant.: 18



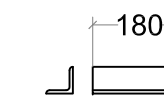
Pos.: 6
 Chapa #5/16"
 Cant.: 36



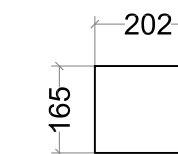
Pos.: 4
 Chapa #1/4"
 Cant.: 18



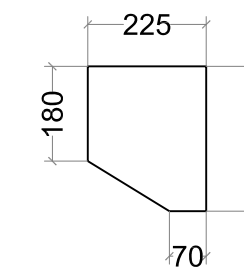
Pos.: 5
 Perfil L 2" #1/4"
 Cant.: 72



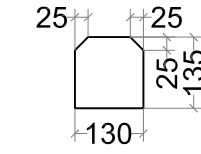
Pos.: 8
 Chapa #3/8"
 Cant.: 18



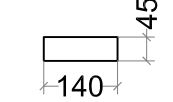
Pos.: 9
 Chapa #5/16"
 Cant.: 36



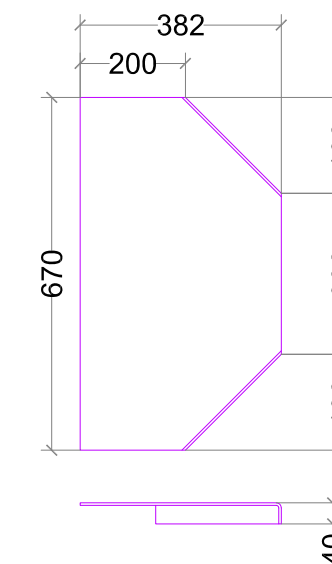
Pos.: 11
 Chapa #3/16"
 Cant.: 18



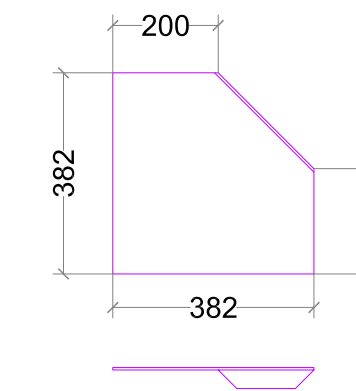
Pos.: 13
 Chapa #3/16"
 Cant.: 18



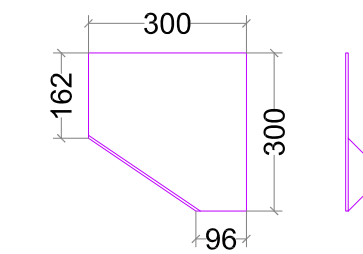
Pos.: 20
 Chapa #3/16"
 Cant.: 14



Pos.: 21
 Chapa #3/16"
 Cant.: 4



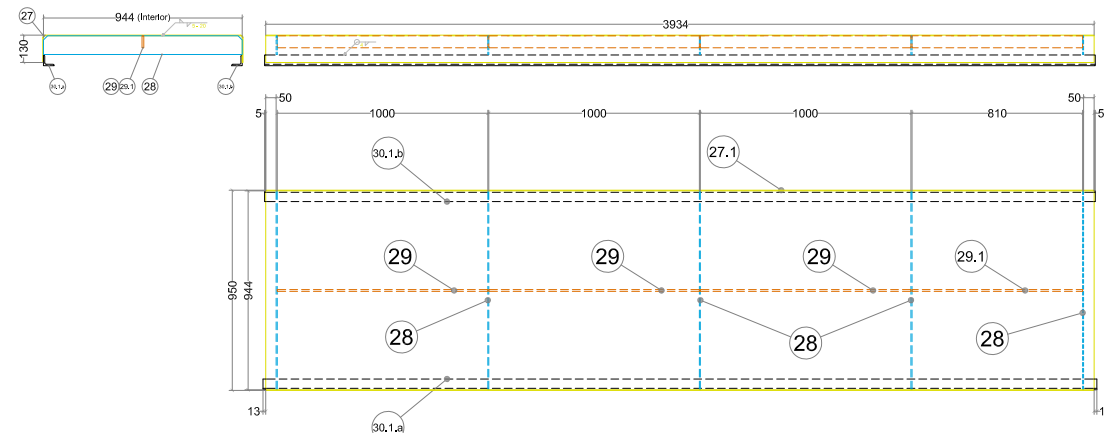
Pos.: 22
 Chapa #3/16"
 Cant.: 64
 (32 Plegado a Izquierda
 32 Plegado a Derecha)



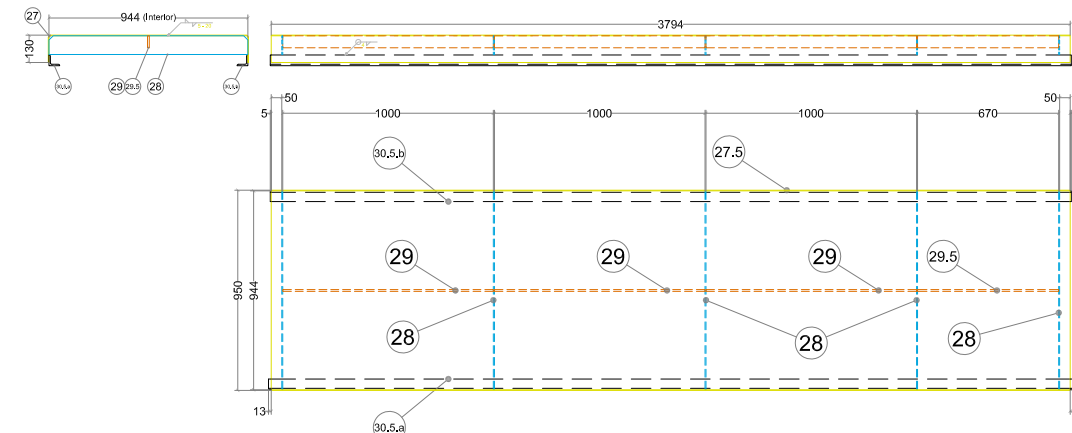
REV.	DESCRIPCION	DIBUJO	PROYECTO	APROBO	FECHA

TAIBI S.R.L. INGENIERIA - INSTALACIONES		BENTELER S.A.			
DIBUJO: AAR		OBRERA: PLANTA CATAFORESIS KTL PLANT			
PROYECTO: LRS		TITULO: FABRICACION ESTRUCTURA PORTICOS TRANSPORTADORES			
APROBO: JT		PLANO N°:		REEMPLAZA A:	
FECHA: 07/05/2008		PTRAN-03		ESCALA 1:10 / 1:25	
LA FIRMA SE RESERVA EL DERECHO DE ESTE ELABORADO, PROHIBIENDO SU REPRODUCCION PARCIAL O TOTAL, SIN PREVIA AUTORIZACION ESCRITA.					

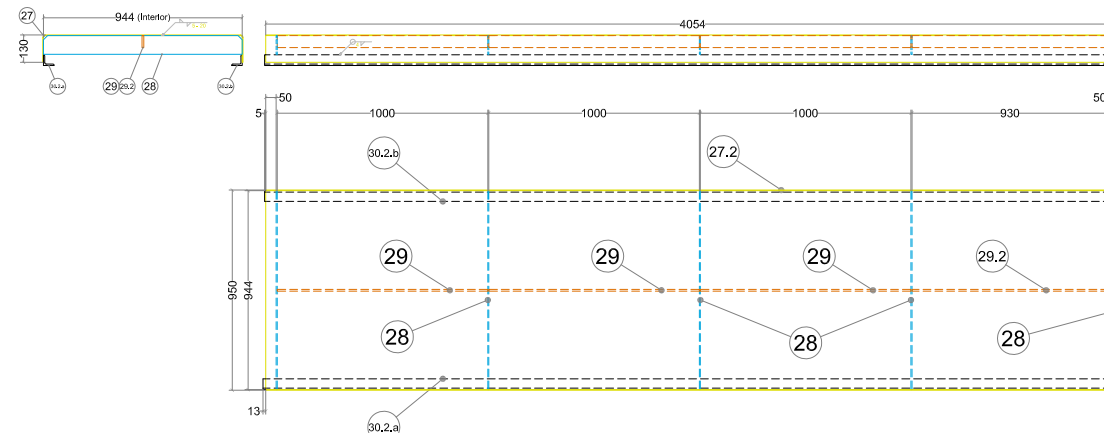
PLATAFORMA NIVEL +4.735
Módulo: 1
Cant.: 2



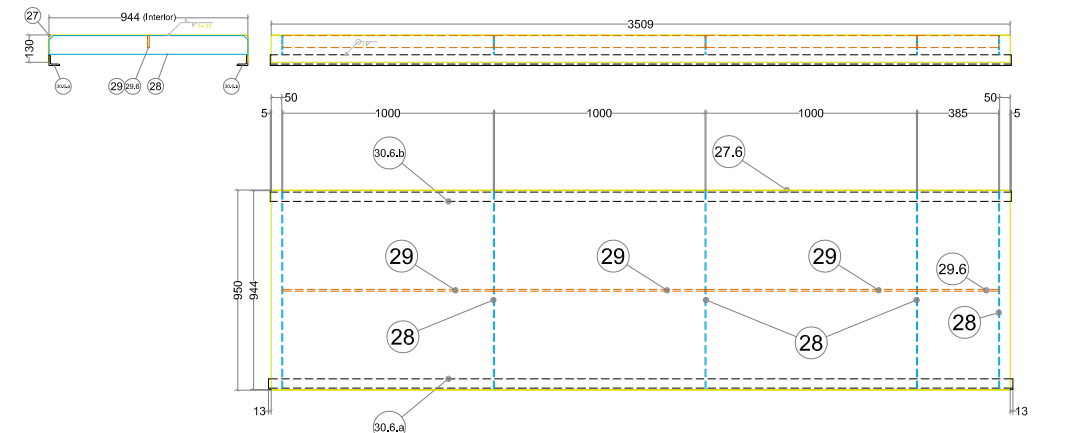
PLATAFORMA NIVEL +4.735
Módulo: 5
Cant.: 2



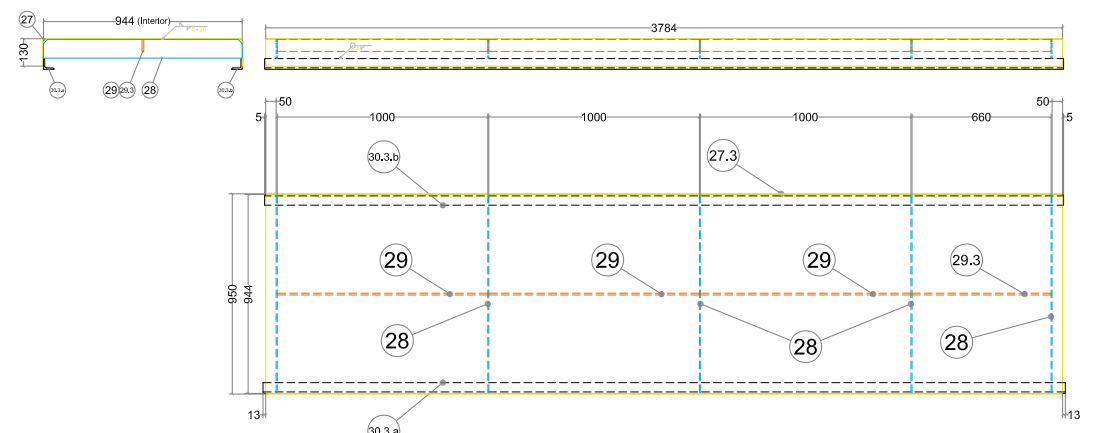
PLATAFORMA NIVEL +4.735
Módulo: 2
Cant.: 2



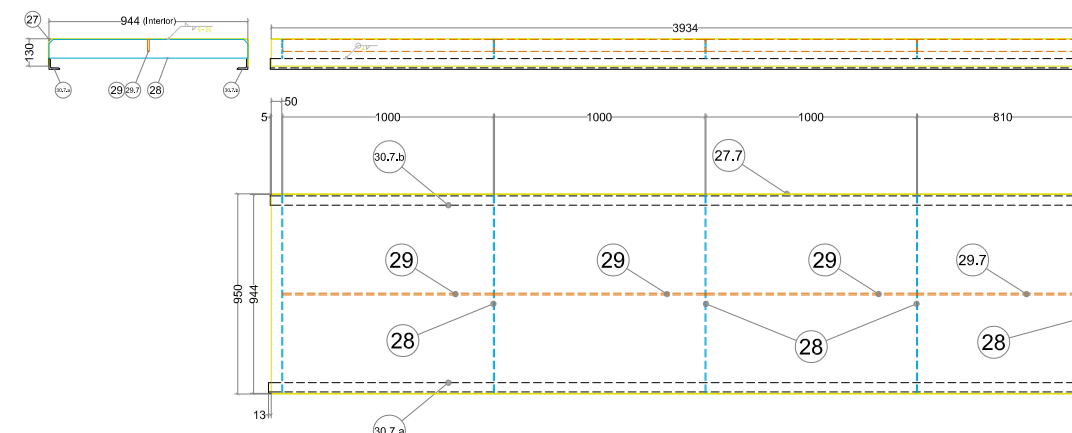
PLATAFORMA NIVEL +4.735
Módulo: 6
Cant.: 2



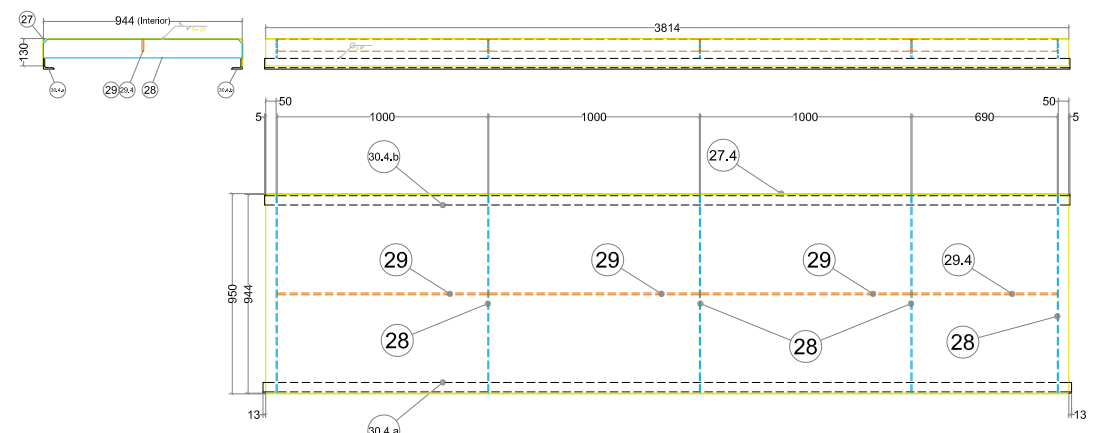
PLATAFORMA NIVEL +4.735
Módulo: 3
Cant.: 2



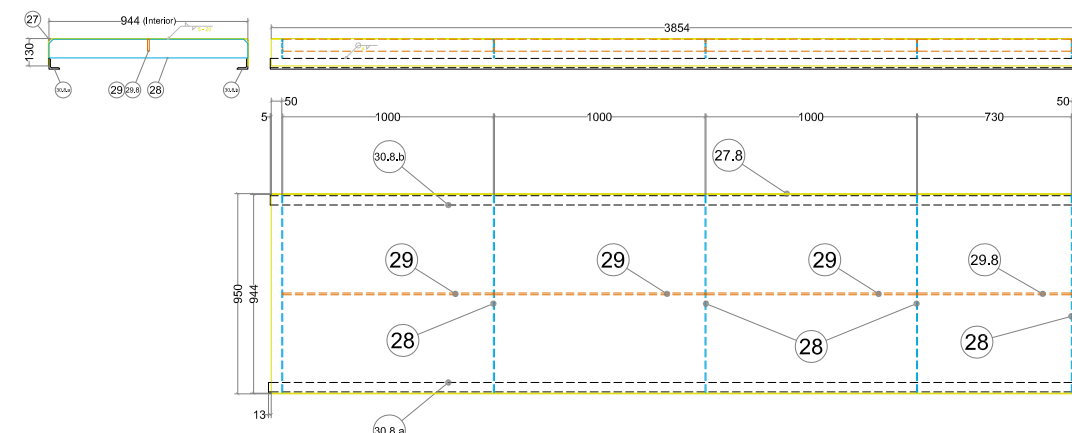
PLATAFORMA NIVEL +4.735
Módulo: 7
Cant.: 2



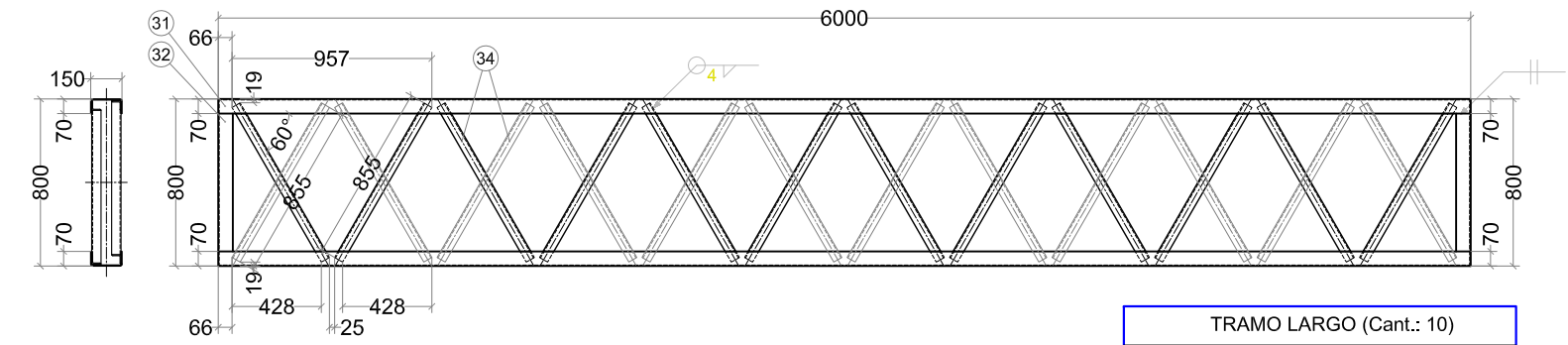
PLATAFORMA NIVEL +4.735
Módulo: 4
Cant.: 2



PLATAFORMA NIVEL +4.735
Módulo: 8
Cant.: 2



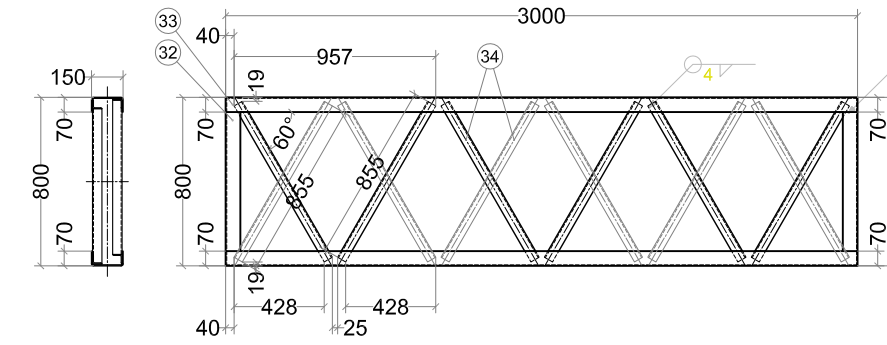
VIGA CARRILERA - Tramo Largo
Cant.: 10



TRAMO LARGO (Cant.: 10)			
POS	Denominación	Long. [mm]	Cant. x Tramo
31	Chapa Plegada #3/16"	6.000	2
32	Chapa Plegada #3/16"	660	2
34	Perfil L 1 3/4" #3/16"	885	24

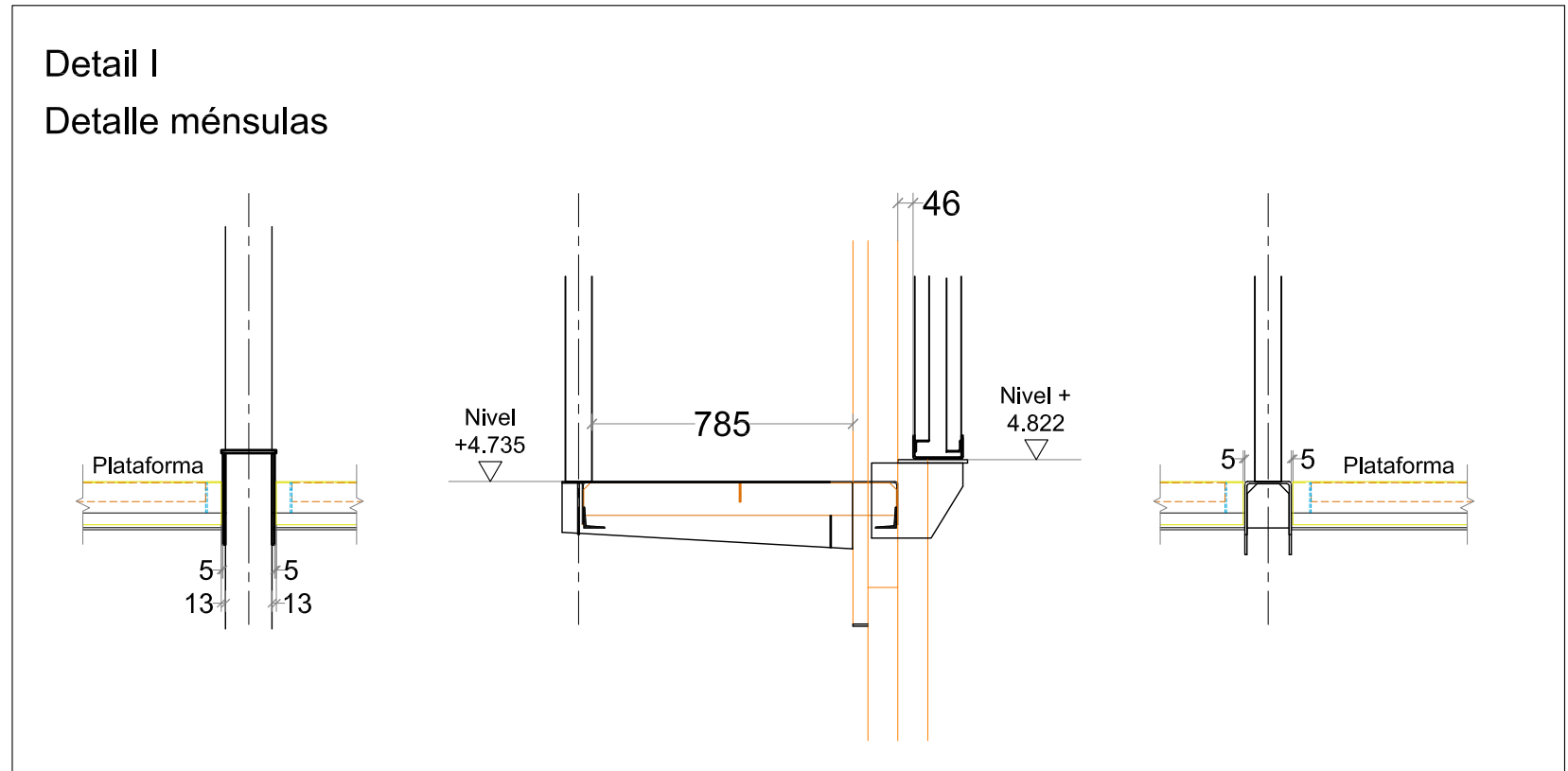
Posiciones 31 y 32: Desarrollo 282mm

VIGA CARRILERA - Tramo Corto
Cant.: 2



TRAMO CORTO (Cant.: 2)			
POS	Denominación	Long. [mm]	Cant. x Tramo
33	Chapa Plegada #3/16"	3.000	2
32	Chapa Plegada #3/16"	660	2
34	Perfil L 1 3/4" #3/16"	885	12

Posiciones 32 y 33: Desarrollo 282mm



REV.	DESCRIPCION	DIBUJO	PROYECTO	APROBO	FECHA

TAIBI S.R.L. INGENIERIA - INSTALACIONES		BENTELER S.A.	
DIBUJO: AAR		OBRERA: PLANTA CATAFORESIS KTL PLANT	
PROYECTO: LRS		TITULO: FABRICACION ESTRUCTURA PORTICOS TRANSPORTADORES	
APROBO: JT		PLANO N°:	REEMPLAZA A:
FECHA: 07/05/2008		PTRAN-04	ESCALA 1:25
LA FIRMA SE RESERVA EL DERECHO DE ESTE ELABORADO, PROHIBIENDO SU REPRODUCCION PARCIAL O TOTAL, SIN PREVIA AUTORIZACION ESCRITA.		REV.:	